



STATE OF THE AIR 2018

Annual Particle Pollution: Regional Trend Charts

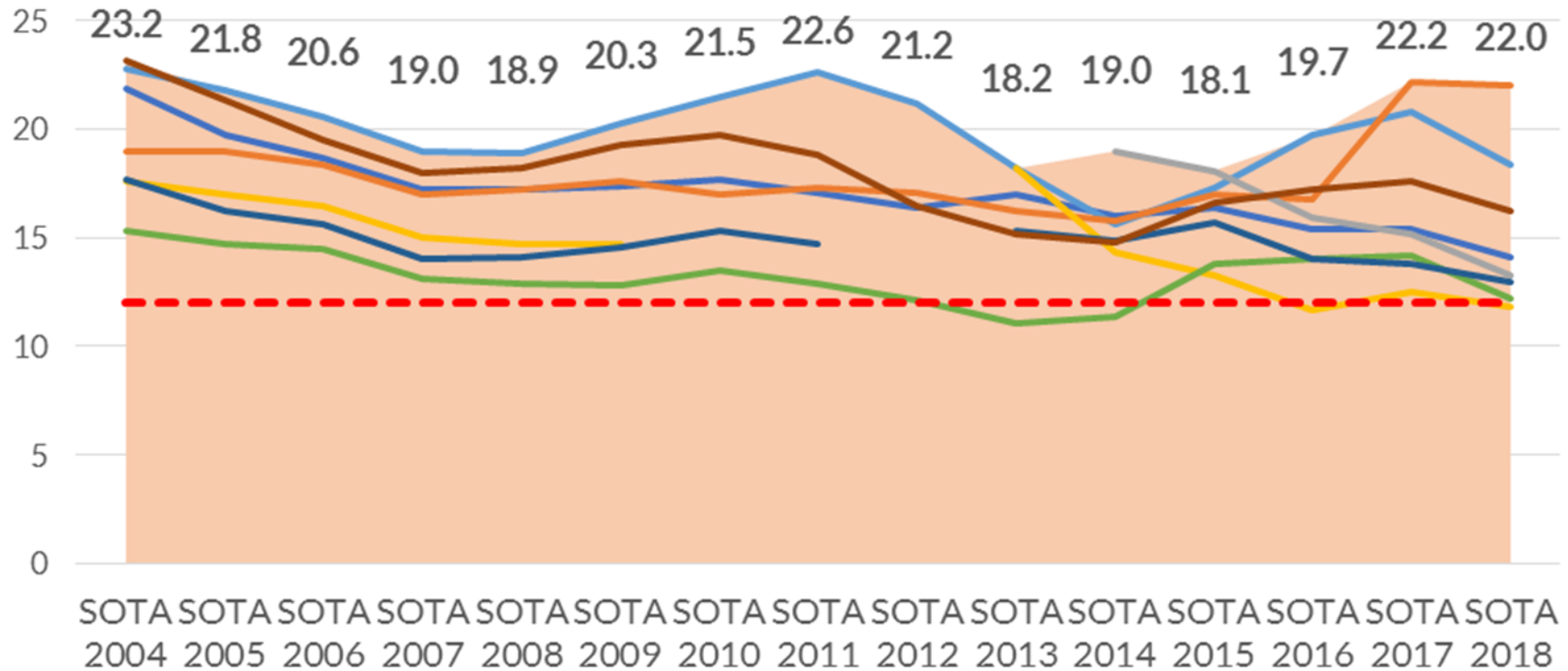
California metropolitan areas dominate the national rankings of cities most polluted by unhealthy annual particle levels in the nation in SOTA 2018 (2014-16 air data).

The charts on the following pages provide a view of the long-term trends in pollution in the California regions ranked among the nation's most polluted by annual particle pollution levels.

A red line on each chart indicates the annual average of 12.0 micrograms per cubic meter, the level over which a failing grade is assigned.

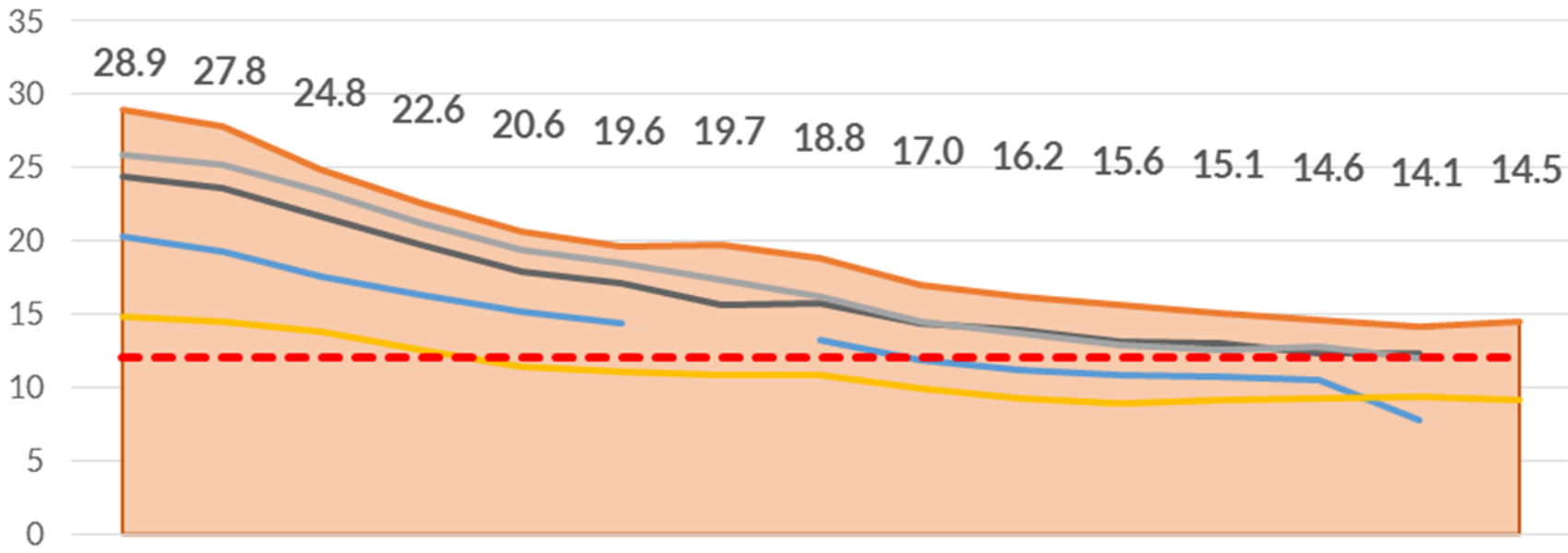
Annual Particle Pollution		
Metropolitan Area	US Rank 2018	US Rank 2017
Visalia-Porterville-Hanford	2	1
Bakersfield	3	2
Los Angeles-Long Beach	4	5
Fresno-Madera	5	3
Modesto-Merced	6	6
El Centro	7	7
San Jose/ San Francisco/ Oakland/ Stockton	10	4
San Luis Obispo	18	10

San Joaquin Valley Region Annual Particle Pollution SOTA 2004 - 2018



- SJV Region
- Kings
- San Joaquin
- Pass/Fail (12.0)
- Fresno
- Madera
- Stanislaus
- Kern
- Merced
- Tulare

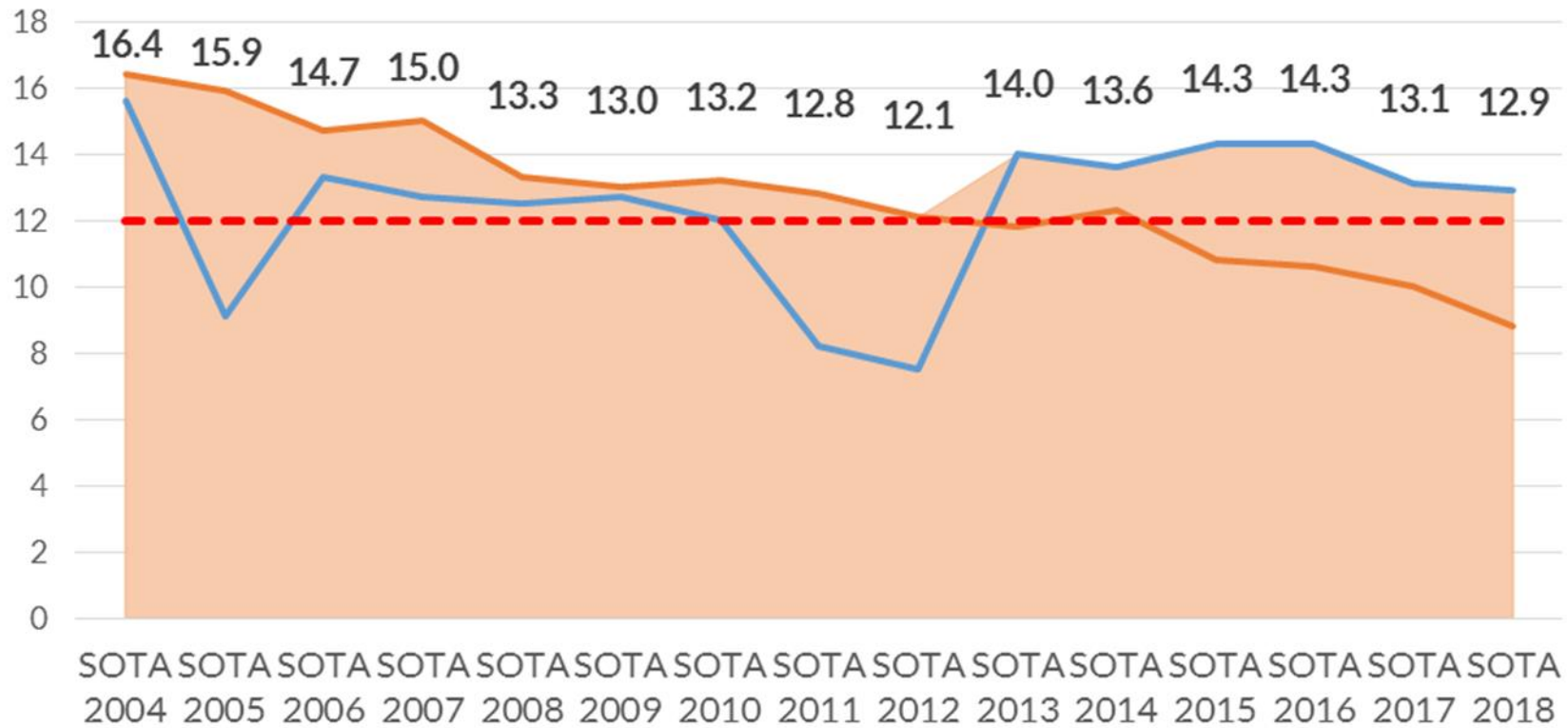
Southern California Annual Particle Pollution SOTA 2004 - 2018



SOTA SOTA SOTA SOTA SOTA SOTA SOTA SOTA SOTA SOTA SOTA SOTA SOTA SOTA SOTA
 2004 2005 2006 2007 2008 2009 2010 2011 2012 2013 2014 2015 2016 2017 2018

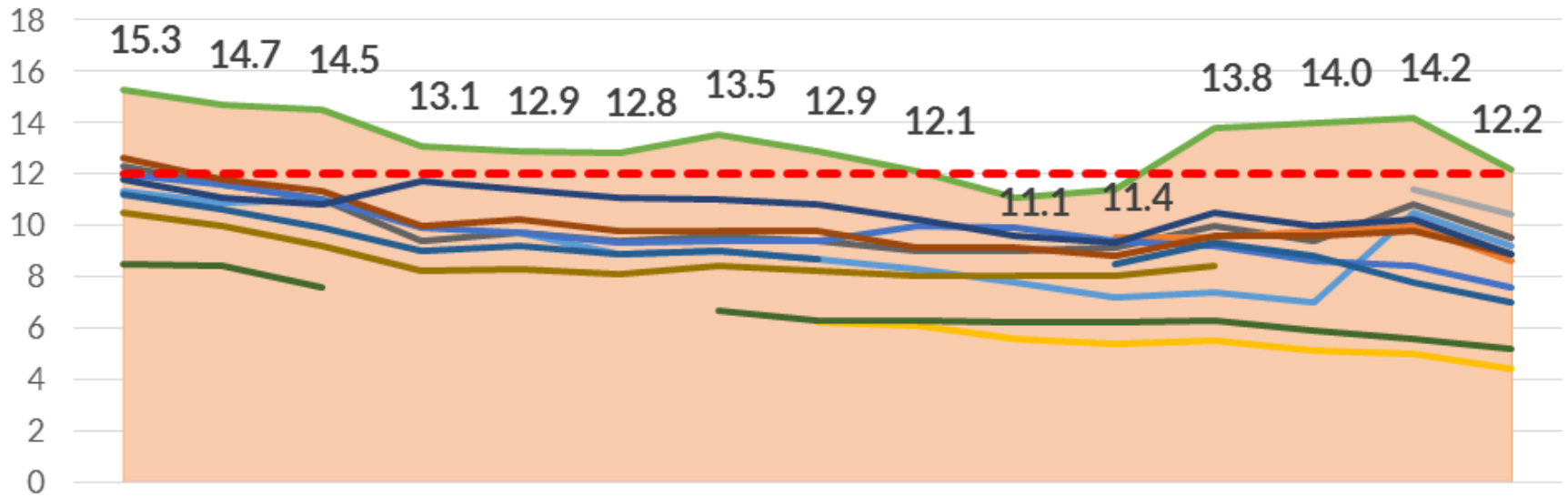
- So. CA Region
- Los Angeles
- Orange
- Riverside
- San Bernardino
- Ventura
- - - Pass/Fail (12.0)

San Diego - Imperial Region Annual Particle Pollution SOTA 2004 - 2018



Region Imperial San Diego Pass/Fail (12.0)

Bay Area Region Annual Particle Pollution SOTA 2004 - 2018



SOTA SOTA SOTA SOTA SOTA SOTA SOTA SOTA SOTA SOTA SOTA SOTA SOTA SOTA SOTA SOTA
 2004 2005 2006 2007 2008 2009 2010 2011 2012 2013 2014 2015 2016 2017 2018

- | | | |
|--|--|---|
| Bay Area Region | Alameda | Contra Costa |
| Marin | Napa | San Benito |
| San Francisco | San Joaquin | San Mateo |
| Solano | Sonoma | Santa Clara |
| Santa Cruz | Pass/Fail (12.0) | |

San Luis Obispo Annual Particle Pollution SOTA 2004 - 2018

