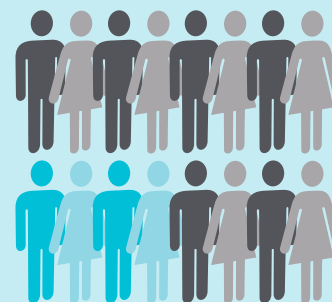


Strong tobacco control laws in these top 10 cities can make a big difference in protecting more than a quarter of California's residents from secondhand smoke and other dangers of tobacco.

The ten most populous cities in California account for

25%

of the state's population



While San Jose, San Francisco, and Long Beach all passed Emerging Issues policies in 2015, more can and should be done to reduce the harmful effects of tobacco use in our most populous areas. Below is a table showing the grades for the ten most populous cities in California.

California's Report Card

Top Ten Cities in California by Population	Overall Tobacco Control
1. Los Angeles (Population: 3,957,022)	C
2. San Diego (Population: 1,368,061)	D
3. San Jose (Population: 1,016,479)	B
4. San Francisco (Population: 845,602)	B
5. Fresno (Population: 520,159)	F
6. Sacramento (Population: 480,105)	C
7. Long Beach (Population: 472,779)	C
8. Oakland (Population: 410,603)	B
9. Bakersfield (Population: 369,505)	F
10. Anaheim (Population: 351,433)	F

* Population numbers from State of California, Department of Finance, E-1 Population Estimates for Cities and Counties. Sacramento, CA, January 1, 2014 and 2015.

