

Rank Among All US Cities for Unhealthy Air

Metro Area	Ozone Rank	Particle Rank
Los Angeles-Long Beach	1	9



Regional Grades and Unhealthy Air Days

County	Ozone Days [†]	Ozone Grade	PM Days [†]	PM Grade
Los Angeles	108	F	11	F
Orange	11	F	2.7	D
Riverside	122	F	14	F
San Bernardino	142	F	6.0	F
Ventura	13	F	0.0	A

[†]Number of Days reported equals the weighted annual average of unhealthy ozone or particle days recorded over the three-year period of 2013-2015. An annual average of 3.3 or more unhealthy days earns an "F" grade. *Data not collected.

"Air Pollution Has Turned My Life Upside Down."

"My daughter Jibiana and I live in Riverside, home to some of the worst air in the country. Air pollution has turned my life upside down. I've been hospitalized or in the emergency room dozens of times because poor air has triggered severe asthma attacks.

Riverside is a hub of freight and transit for the entire United States. That concentration of freight activity leads to increased emissions and poor air quality.

We must fight for smart growth and cleaner air in our communities. I am fighting not just for myself, but for my daughter. Jibiana does not have asthma and I want to make sure it stays that way."

Karen & Jibiana Jakpor, Riverside, CA

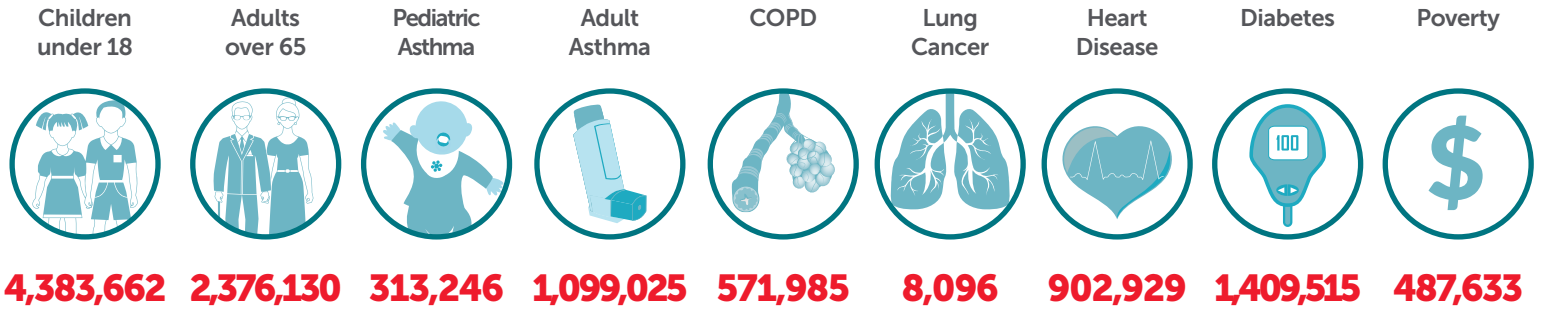
Healthy Air Goals

Continue progress in cutting pollution

- Maintain and strengthen local, state and federal emission controls under the Clean Air Act and California authority to clean up refineries and ports, warehouses, and other diesel freight pollution hotspots.
- Support the transition to zero emission technologies across the transportation sector, from passenger cars to transit buses to heavy duty trucks.
- Increase controls on residential wood burning and support the cleanest heating options to promote health and reduce black carbon climate pollution.
- Support the strongest possible climate change policies and investments in local programs to reduce climate pollution and expand the use of renewable energy.
- Support more walking, biking and other healthier alternatives to driving for all neighborhoods and residents.

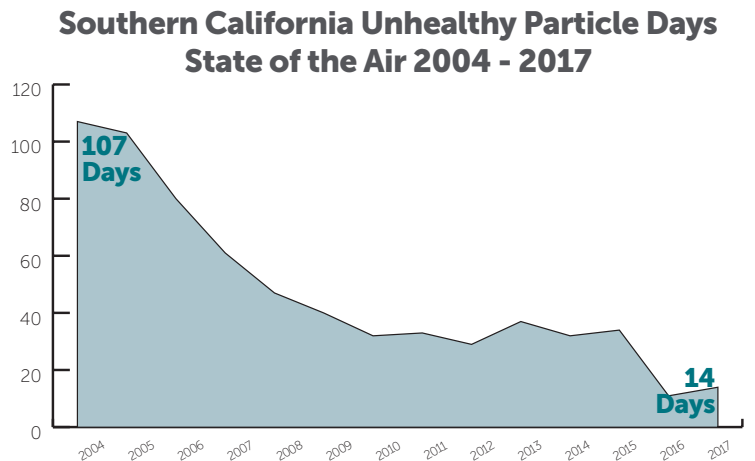
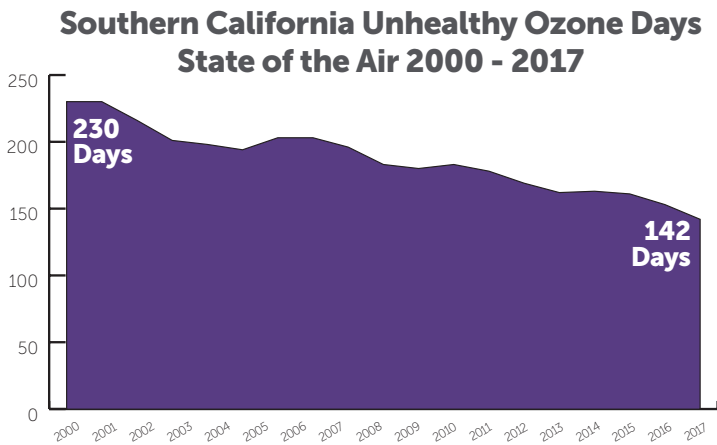
Who is at Risk in Southern California

Air pollution affects us all, but millions of California residents face an elevated risk due to age, pre-existing conditions or living in a disadvantaged community. We must protect all residents, but especially those most vulnerable and impacted by air pollution.



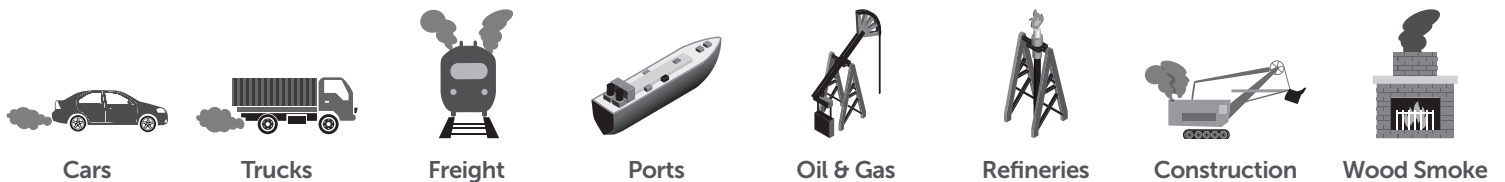
For county-specific data, please visit www.stateoftheair.org/california2017

Key Air Quality Trends



Southern California Pollution Sources

- Nearly 90 percent of pollution in the region comes from mobile sources, including on- and off-road diesel fueled-vehicles, cars, trucks buses and locomotives, ships and aircraft
- Ports and goods movement (contributes to regional pollution and generates significant hot spots of pollution near the Ports of Los Angeles and Long Beach)
- Stationary sources including oil refineries and power plants are a major local source
- Area sources including smoke from residential wood burning



For more information: www.stateoftheair.org/california2017

[/CaliforniaLung](https://www.facebook.com/CaliforniaLung)
[@CaliforniaLung](https://twitter.com/CaliforniaLung)
[/American Lung Association in California](https://www.linkedin.com/company/American-Lung-Association-in-California)
[/CaliforniaLung](https://www.youtube.com/channel/UC...)

Contact:

Bonnie Holmes-Gen: bonnie.holmes-gen@lung.org or (916) 585-7660
 Will Barrett: william.barrett@lung.org or (916) 585-7663

Media Inquiries:

Ryan Endean: ryan.endean@lung.org or (916) 585-7666