

Rank Among All US Cities for Unhealthy Air

Metro Area	Ozone Rank	Particle Rank
San Diego	7	-
El Centro	14	11



“Air Pollution Impacts Our Daily Life.”

“I had asthma as a child so I know how poor air quality can impact your ability to breathe. Now as an adult, I must help my 6-year-old son keep his asthma under control.

Particle pollution like dust and dirt can have an impact on my son’s outdoor activities. When his asthma flares up, it can cause chest tightness and wheezing.

We try not to let it impact our life, but it’s something we have to balance on a daily basis: protecting him while letting him enjoy being a kid.”

Dominique Clark, San Diego, CA

Regional Grades and Unhealthy Air Days

County	Ozone Days [†]	Ozone Grade	PM Days [†]	PM Grade
Imperial	23	F	9.3	F
San Diego	31	F	2.3	D

[†]Number of Days reported equals the weighted annual average of unhealthy ozone or particle days recorded over the three-year period of 2013-2015. An annual average of 3.3 or more unhealthy days earns an “F” grade. *Data not collected.

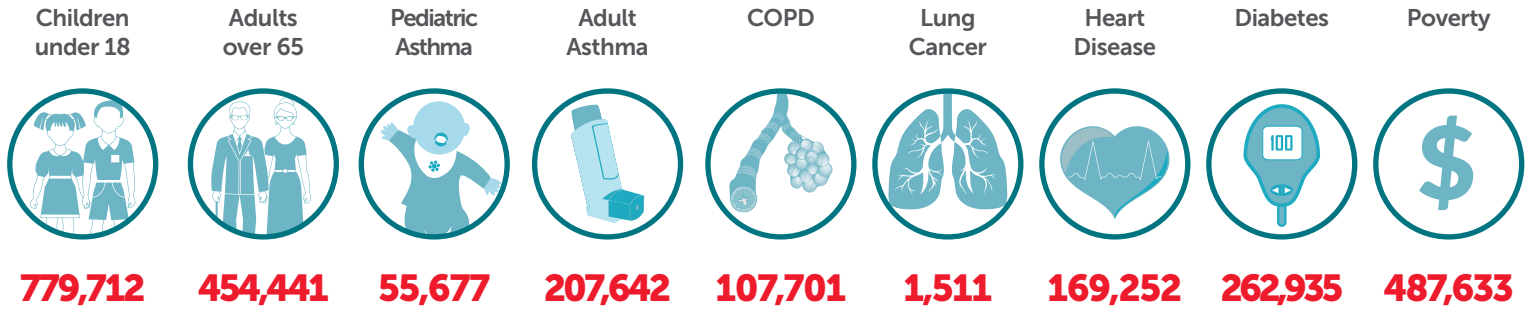
Healthy Air Goals

Continue progress in cutting pollution

- Support the Federal Clean Air Act and state and local efforts to achieve health-based clean air targets.
- Step up state and local leadership to push the rapid transition to zero emission technologies for passenger cars, transit buses and heavy duty trucks.
- Increase controls on residential wood burning and support the cleanest heating options to promote health and reduce black carbon climate pollution.
- Ramp up state and local programs to reduce diesel pollution in disadvantaged communities, including stronger enforcement.
- Support the strongest possible climate change policies and investments in local programs to reduce climate pollution and expand renewable energy.
- Support a shift in transportation funding towards more sustainable options including transit, walking and biking.

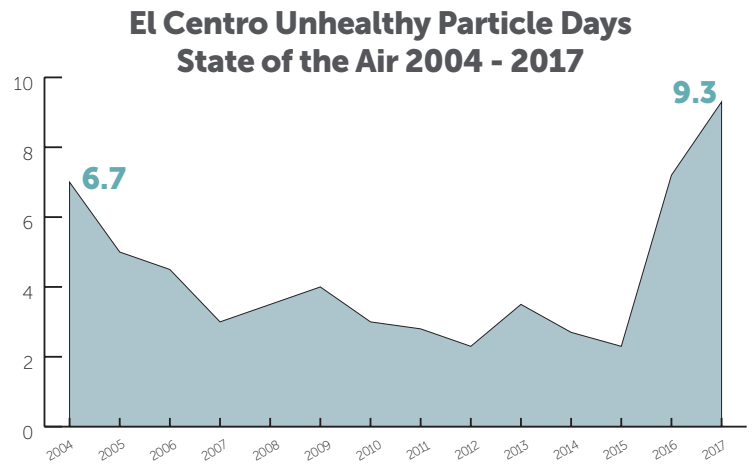
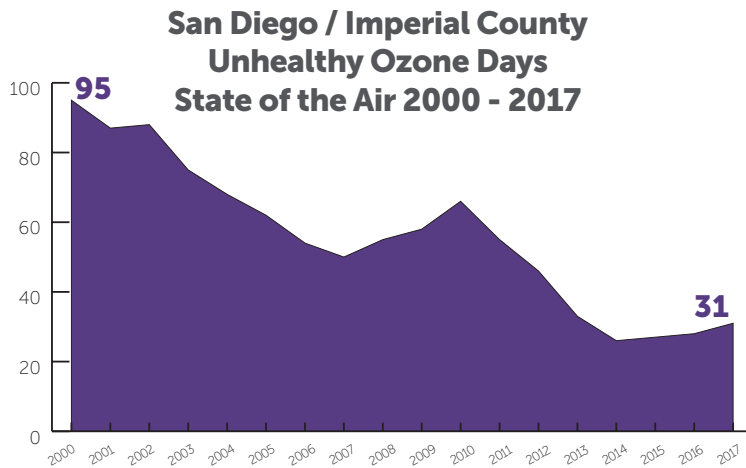
Who is at Risk in San Diego / Imperial County

Air pollution affects us all, but millions of California residents face an elevated risk due to age, pre-existing conditions or living in a disadvantaged community. We must protect all residents, but especially those most vulnerable and impacted by air pollution.



For county-specific data, please visit www.stateoftheair.org/california2017

Key Air Quality Trends



San Diego / Imperial County Pollution Sources

- The majority of smog-forming emissions (NOx) come from mobile sources, including on- and off-road diesel fueled-vehicles, cars, trucks, buses and locomotives, ships and aircraft
- Ports and goods movement in the border areas contribute to local and regional pollution
- Transport of particles from Mexico into Imperial County
- Area sources including smoke from residential wood burning



For more information: www.stateoftheair.org/california2017

[f /CaliforniaLung](#) [t /@CaliforniaLung](#) [in /American Lung Association in California](#) [yt /CaliforniaLung](#)

Contact:

Bonnie Holmes-Gen: bonnie.holmes-gen@lung.org or (916) 585-7660
 Will Barrett: william.barrett@lung.org or (916) 585-7663

Media Inquiries:

Ryan Endean: ryan.endean@lung.org or (916) 585-7666