

## Rank Among All US Cities for Unhealthy Air

Metro Area	Ozone Rank	Particle Rank
Bay Area	<b>18</b>	<b>6</b>

## Regional Grades and Unhealthy Air Days

County	Ozone Days <sup>†</sup>	Ozone Grade	PM Days <sup>†</sup>	PM Grade
<b>Alameda</b>	<b>6.3</b>	<b>F</b>	<b>3.7</b>	<b>F</b>
<b>Contra Costa</b>	<b>4.3</b>	<b>F</b>	<b>1.0</b>	<b>C</b>
<b>Marin</b>	<b>0.0</b>	<b>A</b>	<b>1.7</b>	<b>C</b>
<b>Napa</b>	<b>0.7</b>	<b>B</b>	<b>0.7</b>	<b>B</b>
<b>San Benito</b>	<b>3.0</b>	<b>D</b>	<b>0.0</b>	<b>A</b>
<b>San Francisco</b>	<b>0.0</b>	<b>A</b>	<b>0.7</b>	<b>B</b>
<b>San Joaquin</b>	<b>14</b>	<b>F</b>	<b>23</b>	<b>F</b>
<b>San Mateo</b>	<b>0.7</b>	<b>B</b>	<b>1.0</b>	<b>C</b>
<b>Santa Clara</b>	<b>4.3</b>	<b>F</b>	<b>4.0</b>	<b>F</b>
<b>Santa Cruz</b>	<b>0.0</b>	<b>A</b>	<b>11</b>	<b>F</b>
<b>Solano</b>	<b>1.3</b>	<b>C</b>	<b>4.7</b>	<b>F</b>
<b>Sonoma</b>	<b>0.0</b>	<b>A</b>	<b>0.0</b>	<b>A</b>

<sup>†</sup>Number of Days reported equals the weighted annual average of unhealthy ozone or particle days recorded over the three-year period of 2013-2015. An annual average of 3.3 or more unhealthy days earns an 'F' grade. \*Data not collected.



### "Air Pollution Makes it Hard to Compete in a Sport I Love."

"I love to be outside and be active but my severe asthma combined with poor air quality makes it very difficult.

I run cross-country and compete in track and field, so I always need to be aware of my surroundings. Exhaust from cars triggers asthma attacks a lot for me. It makes it harder for me to breathe.

Being an athlete has its own challenges. I wish I didn't have to worry about dirty air making it harder to compete in a sport I love."

Jaxin Woodward, Vacaville, CA

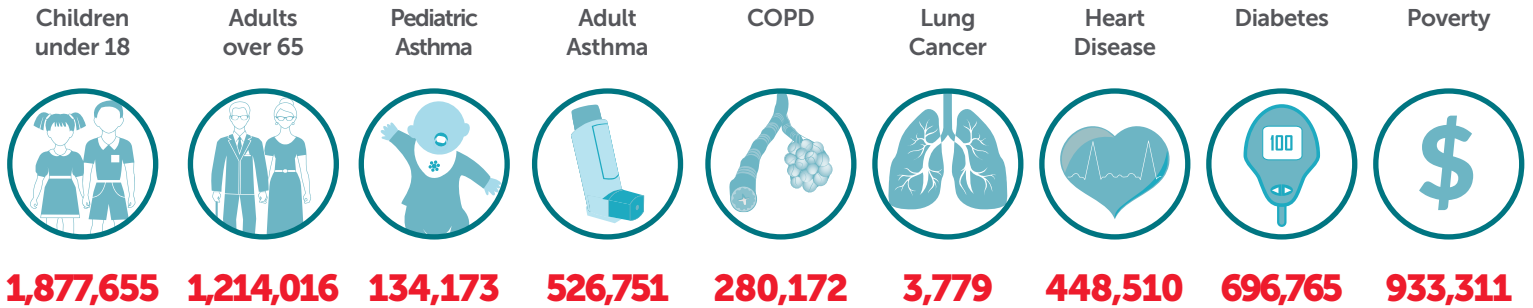
## Healthy Air Goals

### Continue progress in cutting pollution

- Maintain and strengthen local, state and federal emission controls under the Clean Air Act and California authority to clean up refineries and ports, warehouses, and other diesel freight pollution hotspots.
- Support the transition to zero emission technologies across the transportation sector, from passenger cars to transit buses to heavy duty trucks by cleaning up local pollution impacts from refineries and ports.
- Increase controls on residential wood burning and support the cleanest heating options to promote health and reduce black carbon climate pollution.
- Support the strongest possible climate change policies and investments in local programs to reduce climate pollution and expand the use of renewable energy.
- Support more walking, biking and other healthier alternatives to driving for all neighborhoods and residents.

# Who is at Risk in the Bay Area

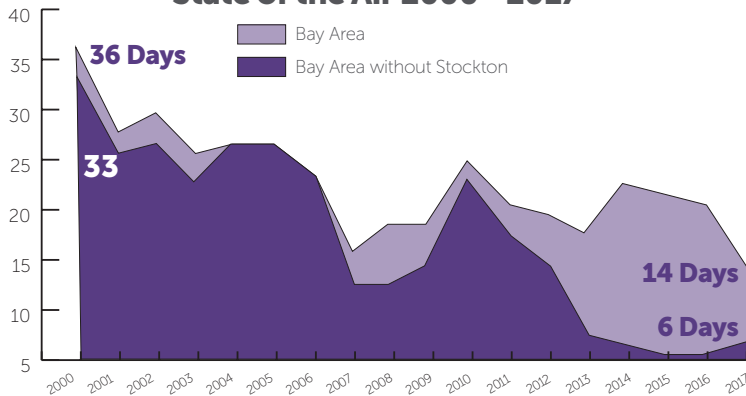
Air pollution affects us all, but millions of California residents face an elevated risk due to age, pre-existing conditions or living in a disadvantaged community. We must protect all residents, but especially those most vulnerable and impacted by air pollution.



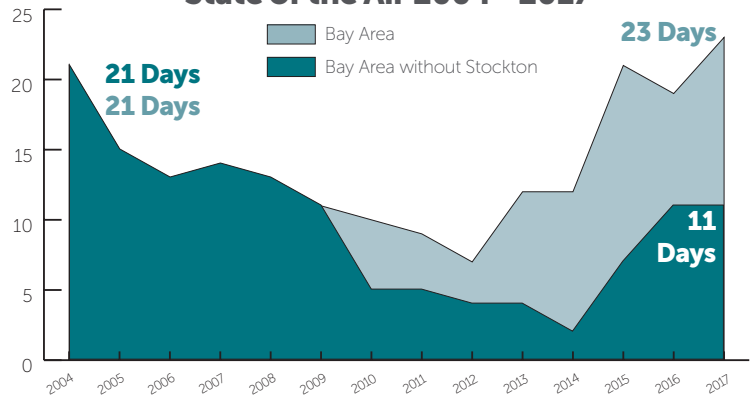
For county-specific data, please visit [www.stateoftheair.org/california2017](http://www.stateoftheair.org/california2017)

## Key Air Quality Trends

**Bay Area Unhealthy Ozone Days  
State of the Air 2000 - 2017**



**Bay Area Unhealthy Particle Days  
State of the Air 2004 - 2017**



## Bay Area Pollution Sources

- On-road mobile sources (cars and trucks) represent the largest source of smog-forming emissions (NOx). Other mobile sources include construction and farm equipment, ships and trains.
- Wood smoke from residential wood burning is the single largest source of PM2.5 during the winter months, the period when the Bay Area experiences its highest PM2.5 levels.
- The Port of Oakland, Port of Stockton and freight traffic (trucks, rail and ships) contribute to regional pollution and create significant hot spots of pollution along freeways and near port communities
- Stationary sources, including oil refineries



For more information: [www.stateoftheair.org/california2017](http://www.stateoftheair.org/california2017)

[/CaliforniaLung](https://www.facebook.com/CaliforniaLung) [@CaliforniaLung](https://twitter.com/CaliforniaLung) [/American Lung Association in California](https://www.linkedin.com/company/American Lung Association in California) [/CaliforniaLung](https://www.youtube.com/channel/UC...)

**Contact:**

Bonnie Holmes-Gen: [bonnie.holmes-gen@lung.org](mailto:bonnie.holmes-gen@lung.org) or (916) 585-7660  
Will Barrett: [william.barrett@lung.org](mailto:william.barrett@lung.org) or (916) 585-7663

**Media Inquiries:**

Ryan Endean: [ryan.endean@lung.org](mailto:ryan.endean@lung.org) or (916) 585-7666