



**Trends in Lung Cancer  
Morbidity and Mortality**

**American Lung Association  
Epidemiology and Statistics Unit  
Research and Program Services Division  
April 2012**

## **Table of Contents**

### **Trends in Lung Cancer Morbidity and Mortality**

Introduction

Lung Cancer Mortality Trends, 1979-2008

Lung Cancer Incidence Trends, 1973-2008

Lung Cancer Trends in Hospital Discharges, 1979-2010

Lung Cancer Trends in Survival Rates, 1960-2007

Lung Cancer Types and Stage Distribution, 2001-2007

Smoking-Attributable Lung Cancer Deaths, 2000-2004

Lifetime Risk of Being Diagnosed with and Dying from Lung Cancer, 2006-2008

References

### **List of Tables**

Table 1: Lung Cancer: Number of Deaths by Race and Sex, 1979-1998, 1999-2008

Table 2: Lung Cancer: Age-Adjusted Mortality Rates by Race and Sex, 1979-1998, 1999-2008

Table 3: Lung Cancer: Number of Deaths by Race/Ethnicity, Sex and 10-Year Age Groups, 1999-2008

Table 4: Lung Cancer: Age-Adjusted and Age-Specific Mortality Rates by Race/Ethnicity and Sex, 2000-2008

Table 5: Lung Cancer: Age-Adjusted Mortality Rates by State and Sex, 1999-2008

Table 6: Lung Cancer: Age-Adjusted Mortality Rates by State and Race, 1999-2008

Table 7: Lung Cancer: Prevalence Counts by Race, Sex and Years Since Diagnosis, 2000-2008

Table 8: Respiratory Cancers: Age-Adjusted Incidence Rates by Site, Race and Sex, 1973-2008

Table 9: Lung Cancer: Age-Adjusted Incidence Rates by Race/Ethnicity and Sex, 2004-2008

Table 10: Lung Cancer: Incidence Counts and Age-Adjusted Rates by State and Sex, 2008

Table 11: Lung Cancer: Number of First-Listed Hospital Discharges and Rate Per 10,000 Population by Age, 1979-2010

Table 12: Lung Cancer: Number of First-Listed Hospital Discharges and Rate Per 10,000 Population by Race, 1988-2010

Table 13: Selected Cancer Sites: Relative Five-year Survival Rates by Race, Cases Diagnosed in 1960-1963, 1970-2007

Table 14: Lung Cancer: Five-Year Survival Rates (%) by Type, Race and Sex, 1975-2007

Table 15: Lung Cancer: Lifetime Risk (%) of Being Diagnosed With or Dying From, by Race and Sex, 2005-2008

### **List of Figures**

Figure 1: Age-Adjusted Mortality Rates by Sex and Site, 2004-2008

Figure 2: Age-Adjusted Mortality Rates by Race/Ethnicity and Sex, 2004-2008

Figure 3: Stage Distribution (%) at Time of Diagnosis by Type, 2001-2007

Figure 4: Five-Year Survival Rates (%) by Type and Stage, 2001-2007

Figure 5: Age-Adjusted Smoking-Attributable Mortality Rates Per 100,000 Population by State, 2000-2004

## **Introduction** <sup>(I)</sup>

The incidence and mortality attributed to lung cancer has been rising steadily since the 1930's, primarily due to the popularity of cigarette smoking pre and post World Wars I and II. Lung cancer has been the leading cause of cancer deaths among men since the early 1950's and, in 1987, surpassed breast cancer to become the leading cause of cancer deaths among women in the United States. Lung cancer was estimated to cause 160,340 deaths in 2012, accounting for 28 percent of all cancer deaths.<sup>1</sup> The following report delineates data available from national surveys on lung cancer mortality, prevalence, incidence, hospitalizations and survival rates.

## **Mortality Trends** <sup>(II)</sup>

Beginning with 1999 mortality data, the population standard used for calculating age-adjusted death rates was changed from the 1940 population to the 2000 population.<sup>I</sup> In addition, starting with 1999 data, the tenth revision of international classification of diseases (ICD-10) replaced ninth revision (ICD-9) in coding and classifying mortality data from death certificates.<sup>II</sup> Due to decennial revisions of the International Classification of Diseases (ICD) coding system and the change in age-adjusted standard population, the number and rate of lung cancer deaths for 1999–2008 are not directly comparable to those reported between 1978 and 1998.

Lung cancer causes more deaths than the next three most common cancers combined (colon, breast and prostate). Death rate trends differ between the sexes. Death rates in men have continued to decline since 1991 and after several decades of continuous increases, lung cancer death rates among females have plateaued.<sup>2</sup>

**Table 1** documents the number of deaths due to lung cancer by race and sex between 1979 and 2008. The number of deaths due to lung cancer has increased approximately 4.3 percent from 152,156 in 1999 to 158,656 in 2008. In 2008, the greatest number of lung cancer deaths were among white males and the fewest among black females.<sup>3</sup>

**Table 2** displays the age-adjusted death rate per 100,000 population by race and sex for the same years. In 2008, the age-adjusted death rate was 49.5 per 100,000 persons. The age-adjusted death rate was 63.1 percent greater in males (63.6 per 100,000) than in females (39.0 per 100,000). The age-adjusted death rate in the black population (53.4 per 100,000) was 6.4 percent greater than the rate in the white population (50.2 per 100,000). The age-adjusted death rate in black males (78.5 per 100,000) was 23.8 percent higher than that of white males (63.4 per 100,000). In contrast, white women had an age-adjusted death rate that was 8.9 percent higher than black women (40.2

---

<sup>I</sup> This change had three important outcomes: (i) provided age-adjusted rates that are less divergent from crude rates (ii) ensured that all government agencies use the same standard and (iii) corrected the public perception that age-adjustment to the 1940 population provided out-of-date statistics. Use of the 2000 population standard placed more weight on death rates at older ages and less weight on death rates at younger ages. Because most lung disease rates increase with age, death rates using the new standard generally were higher than those using the old standard.

<sup>II</sup> The ICD is periodically revised to reflect changes in the medical field. This change has had several consequences: (i) new cause-of-death titles and corresponding cause-of-death codes, i.e. ICD-10 has alphanumeric categories rather than numeric categories, (ii) breaks in comparability of cause-of-death statistics, and (iii) restructuring of the leading causes of death. In order to assess the net effect of the new revision on death statistics, a comparability ratio is derived. The comparability ratio is calculated by dividing the number of deaths for a selected cause of death classified by the new revision by the number of deaths classified to the most nearly comparable cause of death by the previous revision. A comparability ratio of 1 denotes no change between revisions; a ratio of less than 1 signifies a decrease and a ratio of greater than 1 symbolizes an increase in deaths. The comparability ratio for lung cancer is 0.9837, indicating a 2 percent decrease in assignments of deaths due to lung cancer when using ICD-10.

versus 36.9 per 100,000, respectively). Overall, age-adjusted death rates have decreased by 11.6% between 1999 and 2008.<sup>4</sup>

**Figure 1** depicts the 2003-2007 age-adjusted death rates for selected cancer sites by sex.

**Figure 2** depicts age-adjusted death rates by race/ethnicity and sex for 2004-2008. Age-adjusted lung cancer death rates among Hispanics, American Indians/Alaska Natives and Asians/Pacific Islanders were considerably lower than rates among whites and blacks.<sup>5</sup>

**Tables 3 and 4** show the number of deaths and the age-specific death rates due to lung cancer by race/ethnicity and sex for 10-year age groups from 1999 through 2008. Deaths attributed to lung cancer increase with age and are greatest among those over 65 years of age. In 2008, age-specific death rates were highest in non-Hispanic black males for all age groups. Age-adjusted death rates were higher among non-Hispanic black females compared to non-Hispanic white females for those aged 35-44, 45 to 54, and 45-54, but lower for those aged 65-74, 75-84 and 85 and older.<sup>6</sup>

**Table 5** delineates state-specific age-adjusted lung cancer death rates by sex from 1999 to 2008. Kentucky experienced the highest lung cancer death rates overall (78.5 per 100,000), among males (110.7 per 100,000) and among females (55.3 per 100,000). Utah had the lowest lung cancer death rate overall (17.9 per 100,000), among males (23.0 per 100,000) and among females (13.8 per 100,000).<sup>7</sup>

**Table 6** displays state-specific age-adjusted lung cancer death rates by race from 1999 to 2008. Among whites, the highest death rate was reported in Kentucky (74.0 per 100,000) while the lowest was reported in Utah (23.1 per 100,000). When examining the death rate in blacks, the small number of deaths in some states makes the corresponding data unreliable. Among the states with more than 20 deaths, the highest death rate in blacks was reported in Kentucky (91.4 per 100,000) while the lowest was reported in New York (37.2 per 100,000).<sup>8</sup>

### **Morbidity Trends** <sup>(III)</sup>

The American Cancer Society estimates that there will be 226,160 new cases of lung cancer in 2012. These new cases will account for almost 14 percent of all cancer diagnoses.<sup>9</sup> There are two national cancer registries that collect data on cancer prevalence and incidence: the Surveillance, Epidemiology and End Results (SEER) program of the National Cancer Institute and the National Program of Cancer Registries (NPCR) program of the Centers for Disease Control and Prevention.

**Table 7** presents lung cancer prevalence counts by race, sex and years since diagnosis. In 2008, 373,489 Americans were living with lung cancer. The majority (57%) of lung cancer patients living have been diagnosed within the last 5 years.<sup>10</sup>

**Table 8** delineates the age-adjusted cancer incidence rates for respiratory cancers by site, sex and race between 1973 and 2008. Lung cancer incidence increased by 20.0 percent from 49.0 per 100,000 in 1973 to 58.8 per 100,000 in 2008. The 2008 incidence rates for lung cancer in men and women were 70.2 per 100,000 and 50.5 per 100,000, respectively. Over the past 33 years, the lung cancer age-adjusted incidence rate has decreased 21.6 percent in males compared to an increase of 106.0 percent in females.<sup>11</sup>

Between 1973 and 2008, the age-adjusted lung cancer incidence rate in white males decreased 19.1 percent while the incidence rate in black males decreased 18.2 percent. However, the 2008 incidence rate in black men was 47.3 percent higher than that of white men (101.2 vs. 68.7 per

100,000, respectively). Lung cancer in both white and black women has more than doubled since 1973, by 158.3 percent and 132.2 percent, respectively. Unlike males, the incidence rates of lung cancer in white women (52.7 per 100,000) and black women (54.8 per 100,000) were similar in 2008.<sup>12</sup>

Malignant mesothelioma is an uncommon, but no longer rare, cancer that is difficult to diagnose and poorly responsive to therapy. Malignant mesothelioma is the most serious of all asbestos-related diseases. In 2008, the age-adjusted mesothelioma cancer incidence rate was 0.9 per 100,000 persons. Although the incidence rate remains low, it has increased 50 percent between 1977 and 2008. The majority of mesothelioma cases are seen in males that have had occupational exposure to asbestos.<sup>13</sup>

Age-adjusted oral cavity and pharynx incidence rates have decreased in both whites and blacks between 1973 and 2008. In 2008, the age-adjusted oral cancer incidence rate was 10.8 per 100,000 persons overall, 11.1 per 100,000 persons in whites and 8.8 per 100,000 in blacks.<sup>14</sup> The overall incidence rate for cancer of the larynx has decreased 39.2 percent between 1973 and 2008. The 2008 incidence rate in black females (1.9 per 100,000) was 72.7 percent higher than white females (1.1 per 100,000). Black males had an incidence rate that was 50.9 percent higher than that of white males (8.3 vs. 5.5 per 100,000, respectively).<sup>15</sup>

**Table 9** displays lung cancer age-adjusted incidence rates by race, ethnicity and sex for 2004 through 2008. Over this 5-year period, Hispanics, Asians/Pacific Islanders, and American Indians/Alaska Natives were less likely to develop lung cancer than non-Hispanic blacks or whites.<sup>16</sup>

**Table 10** delineates state-specific lung cancer counts and rates by sex. In 2008, Kentucky had the highest age-adjusted incidence rate in males (125.1 per 100,000) and in females (80.3 per 100,000). Utah had the lowest at 29.2 per 100,000 in males and 19.0 per 100,000 in females.<sup>17</sup> These rates are consistent with state-specific smoking prevalence rates.<sup>18</sup>

### **Hospitalization Trends**

**Table 11** delineates age-specific hospital discharge data derived from the National Hospital Discharge Survey. In 2010, the total number of discharges reported for lung cancer was 177,000. This represents a discharge rate of 5.8 per 10,000 and was a 40.2 percent decrease from the discharge rate of 9.7 per 10,000 reported in 1988. The greatest number of discharges occurred in the population over age 65.<sup>19</sup>

**Table 12** displays the race-specific number of discharges and discharge rate between 1988 and 2010. The 2010 discharge rate for lung cancer was slightly higher for whites (5.5 per 10,000) than blacks (5.2 per 10,000). These rates should be interpreted with caution due to the large percentage of discharges (14.4 percent) for which race was not reported.<sup>20</sup>

### **Lung Cancer Types** <sup>(iv)</sup>

There are two major types of lung cancer: small cell lung cancer (SCLC) and non-small cell lung cancer (NSCLC). Sometimes a lung cancer may have characteristics of both types, which is known as mixed small cell/large cell carcinoma.

Small cell lung cancer is less common, accounting for approximately 14 percent of all lung cancer cases.<sup>21</sup> This type of lung cancer grows more quickly and is more likely to spread to other organs in

the body. Small cell lung cancer often starts in the bronchi and towards the center of the lungs. Smoking is the main cause.

Non-small cell lung cancer accounts for the remaining 85 percent of lung cancer cases.<sup>22</sup> It generally grows and spreads more slowly than small cell lung cancer. There are three main types of non-small cell lung cancer. They are named for the type of cells in which the cancer develops: squamous cell carcinoma, adenocarcinoma, and large cell carcinoma. Adenocarcinoma is the most frequent form of lung cancer in the United States.

**Figure 3** delineates the stage distribution for the most common lung cancer types. Staging is used to determine whether the cancer has spread and, if so, to what parts of the body. Stages include localized (within lungs), regional (spread to lymph nodes) and distant (spread to other organs). Between 2001 and 2007, 70 percent of all small cell lung cancer cases were diagnosed during the distant stage and only 5 percent were diagnosed at the localized stage. This compares to 55 percent of non-small cell lung cancer diagnosed in the distant stage and 16 percent of cases diagnosed in the localized stage.<sup>23</sup>

### **Trends in Survival Rates**

**Table 13** depicts trends in survival rates for lung and other types of cancer by race from 1960 through 2007 (except 1964–1969). Survival rates for lung cancer tend to be much lower than other common cancers. The expected five-year survival rate for all patients in whom lung cancer is diagnosed is 16.3 percent compared to 65.2 percent for colon, 90.0 percent for breast and 99.9 percent for prostate cancer. Survival rates for all cancers listed have experienced significant increases since 1975–1977.<sup>24</sup>

Compared to whites, blacks experienced lower five-year survival rates for each type of cancer listed. The five-year survival rate for lung cancer in blacks during the period spanning 2001–2007 was 13.3 percent. The survival rate for lung cancer in Whites was better at 16.7 percent.<sup>25</sup>

**Table 14** displays trends in the five-year survival rates by lung cancer type, race and sex. Survival rates for non-small cell lung cancer are greater than those seen for small cell lung cancer. Between 2001 and 2007 the survival rate for non-small cell lung cancer was 18.0 percent compared to 6.2 percent for small cell lung cancer.<sup>26</sup>

The *prognosis* (outlook for survival) for a patient with lung cancer depends, to a large extent, on the cancer's stage. **Figure 4** displays the five-year survival rates for all stages by type of lung cancer. The average five-year survival rate from 2001 through 2007 for localized lung cancer was 52.2 percent compared to 15.6 percent overall and 3.6 percent for a distant tumor. Unfortunately, only 15 percent of people with lung cancer are diagnosed at an early, localized stage.<sup>27</sup>

### **Smoking-Attributable Lung Cancer Deaths**

The most important cause of lung cancer in the United States is cigarette smoking. It is estimated that 80 percent of lung cancer deaths in women and 90 percent in men, respectively, are caused by smoking. Compared to non-smokers, men who smoke are 23 times more likely to develop lung cancer, while women are 13 times more likely. The risk increases with the duration of smoking and amount smoked per day.<sup>28</sup> Between 2000 and 2004, an average of 125,522 Americans (78,680 males and 46,842 females) died of smoking-attributable lung cancer annually. Smoking-attributable annual lung cancer death rates range from a high in Kentucky of 128.6 per 100,000 to a low in Utah of 34.7 per 100,000. As expected, smoking prevalence rates are also highest in Kentucky and lowest

in Utah. **Figure 5** delineates the average annual state-specific smoking-attributable lung cancer death rates between 2000 and 2004.<sup>29</sup>

### **Lifetime Risk of Being Diagnosed With and Dying From Lung Cancer**

Using data from the SEER registry, the National Cancer Institute has calculated the lifetime risk of being diagnosed with lung cancer, as well as the lifetime risk of dying from lung cancer. This risk is calculated for the entire population and includes smokers and non-smokers. These data are displayed in **Table 15** by race and sex for 2006 through 2008. Overall, 7.66 percent of males and 6.33 percent of females will be diagnosed with lung cancer at some point during their lives. The lifetime risk of being diagnosed with and dying from lung cancer is highest in males.<sup>30</sup>

### **International Lung Cancer Data**

Lung cancer is the most common cancer and cancer cause of death in the world, accounting for 1.6 million new cases (12.7% of all new cancer cases) and 1.4 million deaths (18.2% of all cancer deaths) in 2008.<sup>31</sup> Lung cancer death rates vary by country and mimic the development of the smoking epidemic within that country, such that men have higher rates earlier, but women take on more of the lung cancer burden as they begin smoking more.

### **Summary**

Lung cancer is the leading cause of cancer mortality in both men and women in the United States. An estimated 226,160 new cases are expected to be diagnosed in 2012, accounting for almost 14 percent of all cancer diagnoses.<sup>32</sup> It has been shown that rises and declines in lung cancer incidence and mortality rates parallel past trends of cigarette smoking. It has been estimated that active smoking is responsible for close to 90 percent of lung cancer cases; radon causes 10 percent, occupational exposures to carcinogens account for approximately 9 to 15 percent and outdoor air pollution 1 to 2 percent. Because of the interactions between exposures, the combined attributable risk for lung cancer can exceed 100 percent.<sup>33</sup> Five-year survival rates are low compared to other common cancers at 16.3 percent.<sup>34</sup>

## **Footnotes**

- I. Unless otherwise noted, terms such as higher or less are not intended to indicate statistical significance.
- II. Information on mortality for lung cancer is available from two different sources: the National Center for Health Statistics (NCHS) and the Surveillance, Epidemiology and End Results (SEER) program of the National Cancer Institute. This report obtains mortality information from the National Center for Health Statistics. All mortality estimates for 1999 to 2007 are coded by ICD-10 revision and age-adjusted to the 2000 U.S. standard population.
- III. The National Program of Cancer Registries began in 1992 after Congress mandated the Centers for Disease Control and Prevention (CDC) to provide funds to states and territories to improve existing cancer registries, implement registries where they did not exist, and develop standards for states to follow. Currently the CDC supports 45 states, 3 territories and the District of Columbia.
- IV. The majority of the lung cancer data presented in this report is collected by the Surveillance, Epidemiology and End Results (SEER) program of the National Cancer Institute. The SEER Program is a continuing project of the National Cancer Institute that has collected cancer data since 1973 from designated population-based cancer registries in various areas of the country. Rates are adjusted to the 2000 U.S. population.
- V. Information on lung cancer types and stages comes from the Surveillance, Epidemiology and End Results (SEER) program of the National Cancer Institute and the American Cancer Society.

## **Glossary**

**Mortality** is the term used to refer to deaths. Mortality rates are per 100,000 population and are usually age-adjusted to the 2000 U.S. standard population.

**Age-Adjusted Mortality Rate:** is a figure that is statistically adjusted to remove the distorting effect of age when comparing populations with different age structures. Most rates are age-adjusted to the 2000 U.S. standard population.

**Morbidity** is defined as illness and is the term used to refer to measures of illness, such as hospitalizations or emergency room visits.

**Prevalence:** is the number of existing cases of a particular condition, disease or other occurrence (e.g. persons smoking) at a given time. Prevalence rates are the number of existing cases in a particular population quantity at a given time (e.g. 10 cases per 100,000). Chronic disease prevalence is reported per 1,000 population.

**Incidence:** is the number of new cases occurring in a population during a particular period of time (e.g. 100 cases of tuberculosis from 1998 to 2002). Incidence rates are reported per 100 or 100,000 population.

## Sources:

---

- <sup>1</sup> American Cancer Society. [Cancer Facts and Figures, 2012](#).
- <sup>2</sup> Centers for Disease Control and Prevention. National Center for Health Statistics. National Vital Statistics Report. [Deaths: Final Data for 2008](#). December 2011; 59(10).
- <sup>3</sup> Ibid.
- <sup>4</sup> Ibid.
- <sup>5</sup> U.S. National Institutes of Health. National Cancer Institute: [SEER Cancer Statistics Review, 1973-2008](#).
- <sup>6</sup> Centers for Disease Control and Prevention. National Center for Health Statistics. [CDC Wonder On-line Database](#), compiled from Compressed Mortality File 1999–2008 Series 20 No. 2N, 2011.
- <sup>7</sup> Ibid.
- <sup>8</sup> Ibid.
- <sup>9</sup> American Cancer Society. [Cancer Facts and Figures, 2012](#).
- <sup>10</sup> U.S. National Institutes of Health. National Cancer Institute: [SEER Cancer Statistics Review, 1973-2008](#).
- <sup>11</sup> Ibid.
- <sup>12</sup> Ibid.
- <sup>13</sup> Ibid.
- <sup>14</sup> Ibid.
- <sup>15</sup> Ibid.
- <sup>16</sup> Ibid.
- <sup>17</sup> U.S. National Institutes of Health. National Cancer Institute: [State Cancer Profiles web tool](#).
- <sup>18</sup> Centers for Disease Control and Prevention. Behavioral Risk Factor Surveillance System. 2010 raw data analyzed by American Lung Association using SPSS and SUDAAN software.
- <sup>19</sup> National Center for Health Statistics: National Hospital Discharge Survey. 2010 raw data analyzed by American Lung Association using SPSS software.
- <sup>20</sup> Ibid.
- <sup>21</sup> U.S. National Institutes of Health. National Cancer Institute: [SEER Cancer Statistics Review, 1973-2008](#).
- <sup>22</sup> Ibid.
- <sup>23</sup> Ibid.
- <sup>24</sup> Ibid.
- <sup>25</sup> Ibid.
- <sup>26</sup> Ibid.
- <sup>27</sup> Ibid.
- <sup>28</sup> U.S. Department of Health and Human Services. [The Health Consequences of Smoking: A Report of the Surgeon General. 2004](#).
- <sup>29</sup> Centers for Disease Control and Prevention. [Smoking-Attributable Mortality, Morbidity and Economic Costs \(SAMMEC\) Database](#).
- <sup>30</sup> U.S. National Institutes of Health. National Cancer Institute: [SEER Cancer Statistics Review, 1973-2008](#).
- <sup>31</sup> World Health Organization. [Fact Sheet No 297: Cancer](#). February 2012.
- <sup>32</sup> American Cancer Society. [Cancer Facts and Figures, 2012](#).
- <sup>33</sup> Alberg, AJ and Samet, J. [Epidemiology of Lung Cancer](#). *Chest*, January 2003; 123:21S–49S.
- <sup>34</sup> National Cancer Institute: [SEER Cancer Statistics Review, 1975–2008](#).

**Table 1: Number of Deaths by Race and Sex, 1979-1998, 1999-2008**

Year	All Races			White			All Other Races <sup>1</sup>					
	Total	Male	Female	Total	Male	Female	Total			Black		
							Total	Male	Female	Total	Male	Female
1979 <sup>2</sup>	98,541	72,803	25,648	87,532	64,338	23,194	11,009	8,465	2,454	10,247	7,991	2,256
1980	103,844	75,535	28,309	92,182	66,651	25,531	11,662	8,884	2,778	10,957	8,382	2,575
1981	106,561	76,764	29,797	94,441	67,525	26,916	12,120	9,239	2,881	11,372	8,697	2,675
1982	111,393	79,228	32,165	98,780	69,686	29,094	12,613	9,542	3,071	11,857	9,003	2,854
1983	115,023	80,338	34,685	101,857	70,598	31,259	13,166	9,740	3,426	12,282	9,117	3,165
1984	118,730	82,491	36,239	105,027	72,239	32,788	13,703	10,252	3,451	12,708	9,569	3,139
1985	122,566	83,854	38,702	108,529	73,519	35,010	14,037	10,335	3,692	13,009	9,615	3,394
1986	125,522	85,057	40,465	111,049	74,517	36,532	14,473	10,540	3,933	13,354	9,773	3,581
1987	130,009	87,261	42,748	114,888	76,398	38,490	15,121	10,863	4,258	13,886	10,065	3,821
1988	133,284	88,059	45,225	117,826	77,063	40,763	15,458	10,996	4,462	14,131	10,112	4,019
1989	137,150	89,052	48,098	121,023	77,659	43,364	16,127	11,393	4,734	14,703	10,457	4,246
1990	141,285	91,091	50,194	124,650	79,488	45,162	16,635	11,603	5,032	15,144	10,632	4,512
1991	143,758	91,690	52,068	126,872	80,028	46,844	16,886	11,662	5,224	15,201	10,545	4,656
1992	145,943	91,405	54,538	128,719	79,728	48,991	17,224	11,677	5,547	15,472	10,530	4,942
1993	148,855	92,564	56,291	131,337	80,620	50,717	17,518	11,944	5,574	15,641	10,733	4,908
1994	149,482	91,893	57,589	131,871	80,096	51,775	17,611	11,797	5,814	15,670	10,555	5,115
1995	151,200	91,856	59,344	133,366	80,088	53,278	17,834	11,768	6,066	15,790	10,537	5,253
1996	152,015	91,620	60,395	134,055	79,809	54,246	17,960	11,811	6,149	15,835	10,463	5,372
1997	153,310	91,352	61,958	135,060	79,624	55,436	18,250	11,728	6,522	16,014	10,336	5,678
1998	154,561	91,447	63,114	136,026	79,649	56,377	18,535	11,798	6,737	16,105	10,288	5,817
1999 <sup>3</sup>	152,156	89,453	62,703	133,752	77,846	55,906	18,404	11,607	6,797	15,963	10,135	5,828
2000	155,521	90,469	65,052	136,912	78,747	58,165	18,609	11,722	6,887	16,066	10,153	5,913
2001	156,058	90,426	65,632	137,274	78,665	58,609	18,784	11,761	7,023	16,019	10,131	5,888
2002	157,713	90,171	67,542	138,661	78,465	60,196	19,052	11,706	7,346	16,316	10,075	6,241
2003	158,086	89,964	68,122	138,743	78,215	60,528	19,343	11,749	7,594	16,372	9,988	6,384
2004	158,091	89,630	68,461	138,425	77,730	60,695	19,666	11,900	7,766	16,472	9,995	6,477
2005	159,292	90,187	69,105	139,442	78,379	61,063	19,850	11,808	8,042	16,567	9,887	6,680
2006	158,664	89,279	69,385	138,814	77,476	61,338	19,850	11,803	8,047	16,493	9,823	6,670
2007	158,760	88,372	70,388	138,730	76,502	62,228	20,030	11,870	8,160	16,494	9,839	6,655
2008	158,656	88,586	70,070	138,715	76,761	61,954	19,941	11,825	8,116	16,250	9,638	6,612

Source: Centers for Disease Control and Prevention. National Center for Health Statistics. National Vital Statistics Reports. Deaths: Final Data for 2008. Volume 58, No 19. May 20, 2010.

Notes:

(1) All races other than white.

(2) International Classification Of Diseases, 9th Revision (ICD-9) Code 162.

(3) International Classification Of Diseases, 10th Revision (ICD-10) Code C33-C34.

**Table 2: Age-Adjusted Mortality Rates<sup>1,2</sup> by Race And Sex, 1979-1998, 1999-2008**

Year	All Races						All Other Races <sup>2</sup>					
	All Races			White			Total			Black		
	Total	Male	Female	Total	Male	Female	Total	Male	Female	Total	Male	Female
1979 <sup>4</sup>	33.6	55.7	16.3	33.0	54.3	16.4	38.4	67.4	15.7	41.6	74.2	16.6
1980	34.8	56.9	17.6	34.2	55.5	17.6	39.8	69.2	17.1	43.9	77.2	18.5
1981	35.1	56.9	18.2	34.4	55.3	18.2	40.2	70.0	17.2	44.7	79.0	18.9
1982	35.9	57.6	19.2	35.3	56.0	19.4	40.6	70.6	17.6	45.6	80.4	19.5
1983	36.4	57.3	20.3	35.8	55.7	20.5	41.3	70.6	19.1	46.5	80.4	21.2
1984	37.0	58.0	20.8	36.4	56.2	21.0	41.9	72.5	18.9	47.2	83.1	20.7
1985	37.6	58.1	21.8	37.0	56.4	22.1	41.9	71.6	19.5	47.6	82.6	21.8
1986	37.8	57.9	22.3	37.2	56.2	22.5	42.1	71.4	20.2	48.0	82.8	22.6
1987	38.5	58.5	23.1	37.9	56.8	23.3	42.8	71.9	21.3	49.0	84.0	23.7
1988	38.9	58.2	24.0	38.3	56.5	24.3	42.5	71.0	21.6	48.9	83.1	24.3
1989	39.3	57.9	24.9	38.6	56.0	25.3	43.4	72.3	22.1	50.2	85.3	25.0
1990	39.9	58.5	25.6	39.3	56.6	25.9	43.9	72.3	23.2	51.3	86.2	26.4
1991	39.6	57.5	25.8	39.1	55.8	26.1	42.7	70.0	22.8	49.9	83.2	26.1
1992	39.3	56.0	26.4	38.8	54.4	26.7	42.4	68.1	23.6	49.8	81.4	27.3
1993	39.3	55.7	26.6	38.9	54.0	27.0	41.7	67.7	22.9	48.9	80.8	26.2
1994	38.7	54.2	26.6	38.4	52.7	27.1	40.7	64.9	23.1	47.9	77.6	26.7
1995	38.3	53.0	26.9	38.0	51.6	27.4	40.1	63.0	23.5	47.3	75.8	26.9
1996	37.8	51.8	26.8	37.6	50.5	27.5	40.7	64.8	23.3	46.2	73.2	26.5
1997	37.4	50.5	27.0	37.1	49.3	27.5	39.4	61.4	23.8	45.3	70.6	27.4
1998	37.0	49.5	27.0	36.8	48.4	27.5	39.2	56.8	23.6	44.6	68.5	27.5
1999 <sup>5</sup>	56.0	77.0	40.8	56.0	75.8	41.5	55.7	84.9	35.4	65.2	101.8	40.5
2000	56.5	76.6	41.8	56.6	75.5	42.8	54.8	83.4	34.8	64.1	99.5	40.2
2001	55.3	75.2	41.0	55.6	74.2	42.1	52.8	81.1	33.8	62.5	99.1	38.7
2002	54.9	73.2	41.6	55.3	72.5	42.6	51.5	77.0	34.1	61.9	95.0	40.1
2003	54.1	71.7	41.3	54.5	71.1	42.3	50.8	75.1	34.2	60.8	92.4	40.2
2004	53.2	70.1	40.9	53.6	69.4	41.9	49.9	73.2	34.0	59.8	90.0	39.9
2005	52.6	69.0	40.5	53.1	68.7	41.5	48.6	69.9	33.9	58.4	86.4	40.0
2006	51.5	67.0	40.0	52.1	66.8	41.1	47.0	67.5	32.8	56.8	83.7	39.0
2007	50.6	65.1	40.0	51.2	64.8	41.2	46.1	66.3	32.4	55.6	82.2	38.1
2008	49.5	63.6	39.0	50.2	63.4	40.2	44.6	63.9	31.3	53.4	78.5	36.9

Source: Centers for Disease Control and Prevention. National Center for Health Statistics. National Vital Statistics Reports. Deaths: Final Data for 2008. Volume 58, No 19. May, 20, 2010.

Notes:

- (1) Rates for 1979-1998 are per 100,000 persons and age-adjusted to the 1940 U.S. standard population.
- (2) Rates for 1999-2006 are per 100,000 persons and age-adjusted to the 2000 U.S. standard population.
- (3) All races other than white.
- (4) International Classification of Diseases, 9th Revision (ICD-9) Code 162.
- (5) International Classification of Diseases, 10th Revision (ICD-10) Code C33-C34.

**Table 3: Number of Deaths<sup>1</sup> by Race/Ethnicity, Sex and 10-Year Age Groups, 1999-2008**

Year/Age	Total			Hispanic			Non-Hispanic White			Non-Hispanic Black		
	Total	Male	Female	Total	Male	Female	Total	Male	Female	Total	Male	Female
<b>2008</b>												
All Ages	158,656	88,586	70,070	4,804	3,007	1,797	133,866	73,732	60,134	16,101	9,542	6,559
<1	4	4	0	0	0	0	1	1	0	2	2	0
1-14	8	4	4	5	2	3	2	2	0	1	0	1
15-24	29	22	7	4	3	1	20	14	6	4	4	0
25-34	145	85	60	14	12	2	103	57	46	20	9	11
35-44	1,604	834	770	87	49	38	1,170	603	567	265	140	125
45-54	12,532	7,051	5,481	422	245	177	9,658	5,332	4,326	2,093	1,260	833
55-64	30,796	18,296	12,500	909	595	314	25,024	14,613	10,411	4,104	2,627	1,477
65-74	48,293	27,672	20,621	1,438	919	519	40,955	22,193	17,762	4,740	2,852	1,888
75-84	47,948	26,121	21,827	1,433	905	528	41,718	22,521	19,197	3,696	2,059	1,637
85+	17,297	8,497	8,800	492	277	215	15,215	7,396	7,819	1,176	589	587
<b>2007</b>												
All Ages	158,760	88,372	70,388	4,622	2,822	1,800	134,134	73,717	60,417	16,360	9,744	6,616
<1	1	1	0	0	0	0	0	0	0	1	1	0
1-14	5	5	0	1	1	0	2	2	0	2	2	0
15-24	25	17	8	4	4	0	16	9	7	4	3	1
25-34	135	79	56	20	9	11	91	52	39	18	14	4
35-44	1,852	911	941	93	44	49	1,391	681	710	288	145	143
45-54	12,480	6,939	5,541	404	248	156	9,502	5,179	4,323	2,231	1,311	920
55-64	31,216	18,326	12,890	855	545	310	25,518	14,727	10,791	4,112	2,654	1,458
65-74	48,157	27,568	20,589	1,430	905	525	40,732	23,038	17,694	4,933	3,006	1,927
75-84	48,358	26,475	21,883	1,340	814	526	42,343	23,038	19,305	3,643	2,017	1,626
85+	16,528	8,049	8,479	475	252	223	4,538	6,990	7,548	1,126	590	536
<b>2006</b>												
All Ages	158,664	89,279	69,385	4,355	2,746	1,609	134,408	74,685	59,723	16,360	9,738	6,622
<1	1	1	0	0	0	0	0	0	0	1	1	0
1-14	3	2	1	0	0	0	1	1	0	1	1	0
15-24	27	10	17	5	1	4	13	5	8	8	4	4
25-34	155	85	70	13	5	8	99	56	43	32	19	13
35-44	2,023	1,034	989	100	53	47	1,492	762	730	344	175	169
45-54	12,608	7,196	5,412	381	240	141	9,563	5,387	4,176	2,316	1,352	964
55-64	31,317	18,514	12,803	796	545	251	25,677	14,875	10,802	4,098	2,637	1,461
65-74	47,882	27,695	20,187	1,359	864	495	40,622	23,210	17,412	4,865	2,994	1,871
75-84	48,732	27,015	21,717	1,290	804	486	42,805	23,579	19,226	3,684	2,066	1,618
85+	15,915	7,727	8,188	411	234	177	14,135	6,810	7,325	1,011	489	522
<b>2005</b>												
All Ages	159,292	90,187	69,105	4,490	2,878	1,612	134,924	75,500	59,424	16,437	9,794	6,643
<1	0	0	0	0	0	0	0	0	0	0	0	0
1-14	4	3	1	1	1	0	3	2	1	0	0	0
15-24	16	9	7	2	0	2	12	8	4	1	1	0
25-34	133	77	56	15	9	6	82	49	33	19	11	8
35-44	2,323	1,197	1,126	111	64	47	1,743	882	861	384	202	182
45-54	12,624	7,327	5,297	407	257	150	9,647	5,565	4,082	2,228	1,316	912
55-64	31,363	18,663	12,700	848	594	254	25,619	14,922	10,697	4,176	2,694	1,482
65-74	48,390	28,207	20,183	1,355	894	461	41,162	23,737	17,425	4,869	2,987	1,882
75-84	49,032	27,196	21,836	1,337	843	494	43,076	23,761	19,315	3,682	2,053	1,629
85+	15,404	7,506	7,898	414	216	198	13,578	6,573	7,005	1,077	529	548
<b>2004</b>												
All Ages	158,009	89,578	68,431	4,212	2,702	1,510	134,050	74,919	59,131	16,315	9,899	6,416
<1	2	1	1	0	0	0	1	1	0	1	0	1
1-14	8	4	4	3	1	2	4	2	2	0	0	0
15-24	23	14	9	3	1	2	18	12	6	4	3	1
25-34	147	87	60	25	15	10	83	48	35	26	14	12
35-44	2,424	1,279	1,145	85	56	29	1,818	935	883	437	232	205
45-54	12,440	7,311	5,129	379	255	124	9,500	5,443	4,057	2,215	1,413	802
55-64	31,071	18,433	12,638	786	529	257	25,560	14,852	10,708	4,056	2,644	1,412
65-74	49,009	28,438	20,571	1,302	857	445	41,776	23,969	17,807	4,807	2,938	1,869
75-84	48,441	26,977	21,464	1,222	781	441	42,496	23,453	19,043	3,789	2,172	1,617
85+	14,441	7,031	7,410	406	205	201	12,796	6,206	6,590	978	481	497

Continued on next page

**Table 3 continued: Number of Deaths<sup>1</sup> by Race/Ethnicity, Sex and 10-Year Age Groups, 1999-2008**

Year/Age	Total			Hispanic			Non-Hispanic White			Non-Hispanic Black		
	Total	Male	Female	Total	Male	Female	Total	Male	Female	Total	Male	Female
<b>2003</b>												
All Ages	158,086	89,964	68,122	4,136	2,640	1,496	134,437	75,468	58,969	16,252	9,914	6,338
<1	0	0	0	0	0	0	0	0	0	0	0	0
1-14	4	2	2	0	0	0	3	1	2	1	1	0
15-24	25	14	11	4	3	1	18	9	9	3	2	1
25-34	154	78	76	20	7	13	107	55	52	18	12	6
35-44	2,478	1,344	1,134	92	52	40	1,852	986	866	441	251	190
45-54	12,374	7,313	5,061	390	240	150	9,391	5,480	3,911	2,250	1,399	851
55-64	30,956	18,347	12,609	795	549	246	25,613	14,861	10,752	3,955	2,570	1,385
65-74	49,386	28,935	20,451	1,293	877	416	42,204	24,440	17,764	4,892	3,009	1,883
75-84	48,619	27,064	21,555	1,177	723	454	42,752	23,573	19,179	3,739	2,192	1,547
85+	14,088	6,865	7,223	365	189	176	12,495	6,061	6,434	953	478	475
<b>2002</b>												
All Ages	157,713	90,171	67,542	4,038	2,617	1,421	134,435	75,754	58,681	16,170	9,983	6,187
<1	0	0	0	0	0	0	0	0	0	0	0	0
1-14	5	4	1	2	1	1	2	2	0	1	1	0
15-24	21	16	5	4	2	2	13	11	2	4	3	1
25-34	165	90	75	27	14	13	97	58	39	23	14	9
35-44	2,698	1,386	1,312	90	45	45	2,026	1,016	1,010	503	287	216
45-54	12,150	7,194	4,956	362	229	133	9,335	5,415	3,920	2,165	1,378	787
55-64	30,684	18,415	12,269	808	567	241	25,218	14,818	10,400	3,994	2,605	1,388
65-74	50,256	29,543	20,713	1,303	846	457	43,104	25,102	18,002	4,930	3,083	1,847
75-84	48,082	26,821	21,261	1,101	729	372	42,506	23,408	19,098	3,641	2,163	1,478
85+	13,642	6,699	6,943	341	184	157	12,126	5,922	6,204	907	447	460
<b>2001</b>												
All Ages	156,058	90,426	65,632	3,816	2,495	1,321	133,266	76,066	57,200	15,883	10,030	5,853
<1	0	0	0	0	0	0	0	0	0	0	0	0
1-14	7	5	2	3	2	1	3	2	1	1	1	0
15-24	20	12	8	7	6	1	9	4	5	3	1	2
25-34	157	77	80	16	10	6	114	55	59	16	7	9
35-44	2,796	1,504	1,292	106	68	38	2,100	1,095	1,005	515	298	217
45-54	12,041	7,190	4,851	364	239	125	9,301	5,421	3,880	2,060	1,352	708
55-64	29,777	17,873	11,904	758	517	241	24,713	14,552	10,161	3,685	2,400	1,285
65-74	51,225	30,699	20,526	1,230	820	410	43,972	26,056	17,916	5,076	3,266	1,810
75-84	46,700	26,406	20,294	1,011	657	354	41,223	23,022	18,201	3,623	2,226	1,397
85+	13,331	6,656	6,675	321	176	145	11,829	5,857	5,972	902	477	425
<b>2000</b>												
All Ages	155,521	90,469	65,052	3,643	2,411	1,232	133,061	76,218	56,843	15,924	10,056	5,868
<1	2	2	0	0	0	0	1	1	0	1	1	0
1-14	3	1	2	0	0	0	3	1	2	0	0	0
15-24	22	14	8	3	3	0	11	7	4	5	2	3
25-34	197	102	95	17	10	7	139	73	66	31	14	17
35-44	2,756	1,542	1,214	90	56	34	1,996	1,076	920	578	359	219
45-54	11,915	7,123	4,792	342	229	113	9,176	5,355	3,821	2,113	1,372	741
55-64	29,271	17,937	11,784	672	471	201	24,777	14,682	10,095	3,688	2,410	1,278
65-74	52,258	31,382	20,876	1,191	793	398	44,952	26,704	18,248	5,178	3,309	1,869
75-84	45,836	25,966	19,870	1,006	666	340	40,666	22,718	17,948	3,414	2,105	1,309
85+	12,806	6,395	6,411	322	183	139	11,337	5,598	5,739	915	483	432
<b>1999</b>												
All Ages	152,156	89,453	62,703	3,545	2,373	1,172	129,967	75,338	54,629	15,834	10,039	5,795
<1	0	0	0	0	0	0	0	0	0	0	0	0
1-14	5	4	1	0	0	0	3	2	1	2	2	0
15-24	20	13	7	3	2	1	9	6	3	8	5	3
25-34	179	97	82	17	10	7	131	71	60	20	11	9
35-44	2,724	1,474	1,250	98	58	40	2,025	1,078	947	531	301	230
45-54	11,434	6,851	4,583	308	208	100	8,832	5,155	3,677	2,029	1,338	691
55-64	29,344	18,013	11,331	724	523	201	24,329	14,654	9,675	3,743	2,500	1,243
65-74	51,848	31,287	20,561	1,170	798	372	44,577	26,596	17,981	5,111	3,267	1,844
75-84	44,261	25,397	18,864	901	606	295	39,153	22,219	16,934	3,483	2,127	1,356
85+	12,339	6,315	6,024	324	168	156	10,907	5,556	5,351	907	488	419

Source: Centers for Disease Control and Prevention. National Center for Health Statistics. WONDER Online Database, compiled from Compressed Mortality File 1999-2008 Series 20 No. 2M, 2010.

Notes:

(1) International Classification Of Diseases, 10th Revision (ICD-10) Code C33-C34.

**Table 4: Age-Adjusted and Age-Specific Mortality Rates<sup>1,2</sup> by Race and Ethnic Origin and Sex, 2000-2008**

Year/Age	Total			Hispanic			Non-Hispanic White			Non-Hispanic Black		
	Total	Male	Female	Total	Male	Female	Total	Male	Female	Total	Male	Female
<b>2008</b>												
All Ages	49.5	63.6	39.0	20.5	29.7	13.7	52.8	66.3	42.6	54.6	80.3	37.7
<1	**	**	**	**	**	**	**	**	**	**	**	**
1-14	**	**	**	**	**	**	**	**	**	**	**	**
15-24	0.1	0.1	**	**	**	**	0.1	**	**	**	**	**
25-34	0.4	0.4	0.3	**	**	**	0.4	0.5	0.4	0.4	**	**
35-44	3.8	3.9	3.6	1.2	1.3	1.2	4.3	4.4	4.2	5.0	5.6	4.4
45-54	28.2	32.3	24.3	8.5	9.6	7.3	30.4	33.8	27.0	40.2	52.4	29.7
55-64	91.4	112.6	71.7	31.8	43.2	21.3	97.1	116.1	79.0	120.6	173.2	78.2
65-74	240	298.7	189.9	95.5	135.2	62.9	257.9	313.1	209.7	257.9	372.4	176.1
75-84	368.1	489.5	283.9	170.1	259.8	106.9	390.7	509.7	306.8	363.2	556.6	252.7
85+	302.3	456.0	228.1	157.1	247.1	106.9	315.4	472.4	239.9	289.4	489.4	205.2
<b>2007</b>												
All Ages	50.6	65.1	40.0	20.9	29.6	14.4	53.9	67.7	43.5	56.8	84.0	39.0
<1	**	**	**	**	**	**	**	**	**	0.2	0.3	**
1-14	**	**	**	**	**	**	**	**	**	**	**	**
15-24	0.1	0.1	**	0.1	0.1	**	0.1	0.1	0.1	0.1	0.1	**
25-34	0.3	0.4	0.3	0.2	0.2	0.3	0.4	0.4	0.3	0.3	0.5	0.1
35-44	4.3	4.2	4.4	1.4	1.2	1.5	5	4.8	5.1	5.3	5.7	5.0
45-54	28.4	32.1	24.9	8.5	10.3	6.7	30	33	27.1	43.6	55.5	33.4
55-64	95.4	116.2	76.1	31.8	42.1	22.2	101.4	119.8	83.8	126.0	182.5	80.6
65-74	248.8	310.2	196.7	100.0	140.7	66.7	266.7	324.2	216.7	276.0	403.9	184.8
75-84	371.3	498.3	283.8	167.1	246.1	111.7	393.8	520.4	305.2	363.2	554.8	254.3
85+	299.8	453.0	227	169.8	256.1	123	310.7	467.7	237.7	287.9	514.8	193.9
<b>2006</b>												
All Ages	51.5	67.0	40.0	20.7	30.3	13.6	54.7	69.7	43.5	57.9	85.4	39.8
<1	**	**	**	**	**	**	**	**	**	**	**	**
1-14	**	**	**	**	**	**	**	**	**	**	**	**
15-24	0.1	**	**	**	**	**	**	**	**	**	**	**
25-34	0.4	0.4	0.4	**	**	**	0.4	0.5	0.4	0.6	**	**
35-44	4.6	4.7	4.5	1.5	1.5	1.5	5.2	5.3	5.1	6.3	6.8	5.9
45-54	29.1	33.8	24.6	8.4	10.5	6.3	30.4	34.5	26.3	46.2	58.5	35.7
55-64	99.1	121.6	78.2	31.3	44.8	19.0	105.1	124.8	86.4	131.3	189.5	84.5
65-74	253.1	319.4	197.0	98.8	140.1	65.2	271.5	334.0	217.3	277.8	410.3	183.1
75-84	373.5	509.9	280.3	167.9	254.2	107.6	395.0	531.2	300.5	370.8	574.5	255.3
85+	300.5	457.7	226.9	160.8	263.9	106.0	313.0	474.2	237.8	268.4	448.1	195.1
<b>2005</b>												
All Ages	52.6	69.0	40.5	22.4	33.3	14.3	55.5	71.4	43.7	59.6	88.1	40.9
<1	**	**	**	**	**	**	**	**	**	**	**	**
1-14	**	**	**	**	**	**	**	**	**	**	**	**
15-24	**	**	**	**	**	**	**	**	**	**	**	**
25-34	0.3	0.4	0.3	**	**	**	0.3	0.4	0.3	**	**	**
35-44	5.3	5.5	5.1	1.7	1.9	1.6	5.9	6.0	5.9	7.0	7.9	6.3
45-54	29.7	35.1	24.5	9.5	11.9	7.1	31.0	36.0	26.0	45.5	58.2	34.6
55-64	103.3	127.6	80.7	35.7	52.3	20.4	108.6	129.7	88.5	140.7	203.5	90.1
65-74	259.6	330.7	199.6	102.6	151.4	63.1	277.8	345.6	219.3	283.5	417.3	187.9
75-84	375.6	515.1	280.9	183.3	281.6	114.9	394.7	534.1	298.7	373.4	575.5	258.8
85+	302.3	468.0	226.2	177.1	269.0	129.0	311.3	480.2	234.1	294.1	503.4	209.9
<b>2004</b>												
All Ages	53.8	62.0	45.9	10.2	12.7	7.6	67.1	76.5	58.1	44.2	56.3	33.2
<1	**	**	**	**	**	**	**	**	**	**	**	**
1-14	**	**	**	**	**	**	**	**	**	**	**	**
15-24	**	**	**	**	**	**	**	**	**	**	**	**
25-34	0.4	0.4	0.3	0.3	**	**	0.3	0.4	0.3	0.5	**	**
35-44	5.5	5.8	5.2	1.4	1.7	1.0	6.1	6.3	5.9	8.0	9.0	7.0
45-54	29.9	35.8	24.2	9.4	12.6	6.2	31.0	35.8	26.2	46.5	64.3	31.3
55-64	106.9	131.7	83.9	35.4	50.0	22.1	112.5	134.2	92.0	144.2	211.1	90.5
65-74	265.5	337.6	205.0	102.6	151.7	63.1	283.2	351.4	224.6	285.3	419.0	190.0
75-84	373.6	517.3	277.0	178.7	279.7	108.9	389.6	530.6	293.5	390.1	619.8	260.5
85+	297.5	466.8	221.3	193.1	287.2	144.8	306.3	480.3	228.4	281.5	488.8	199.6

Continued on next page

**Table 4 continued: Age-Adjusted and Age-Specific Mortality Rates<sup>1,2</sup> by Race and Ethnic Origin and Sex, 2000-2008**

Year/Age	Total			Hispanic			Non-Hispanic White			Non-Hispanic Black		
	Total	Male	Female	Total	Male	Female	Total	Male	Female	Total	Male	Female
<b>2003</b>												
All Ages	54.4	62.9	46.1	10.4	12.8	7.8	67.5	77.3	58.1	44.5	57.0	33.1
<1	**	**	**	**	**	**	**	**	**	**	**	**
1-14	**	**	**	**	**	**	**	**	**	**	**	**
15-24	0.1	**	**	**	**	**	**	**	**	**	**	**
25-34	0.4	0.4	0.4	0.3	**	**	0.4	0.4	0.4	**	**	**
35-44	5.6	6.1	5.1	1.6	1.7	1.4	6.1	6.5	5.7	8.0	9.7	6.5
45-54	30.3	36.5	24.4	10.2	12.6	7.9	31.0	36.5	25.6	48.5	65.3	34.1
55-64	111.0	136.7	87.1	38.1	55.4	22.4	117.0	139.4	95.7	147.4	215.1	93.1
65-74	269.3	346.6	204.8	105.8	161.8	61.2	286.5	359.6	223.9	293.9	434.9	193.5
75-84	377.8	525.1	279.4	183.8	277.3	119.6	392.6	537.0	295.1	389.4	632.5	252.1
85+	298.9	475.1	221.0	189.2	290.9	137.5	306.7	486.8	227.4	283.5	509.3	196.0
<b>2002</b>												
All Ages	54.9	73.2	41.6	23.7	36.2	14.6	57.5	75.0	44.6	62.9	96.6	40.8
<1	**	**	**	**	**	**	**	**	**	**	**	**
1-14	**	**	**	**	**	**	**	**	**	**	**	**
15-24	0.1	**	**	**	**	**	**	**	**	**	**	**
25-34	0.4	0.4	0.4	0.4	**	**	0.4	0.5	0.3	0.4	**	**
35-44	6.0	6.2	5.8	1.5	1.5	1.6	6.5	6.5	6.5	9.0	11.0	7.3
45-54	30.3	36.6	24.3	9.9	12.6	7.3	31.2	36.5	26.0	48.1	66.3	32.5
55-64	115.3	144.0	88.8	40.9	60.7	23.2	120.6	145.7	96.8	155.6	228.0	97.5
65-74	275.0	355.9	207.7	110.4	161.7	69.5	292.0	369.5	225.9	299.5	451.4	191.8
75-84	377.6	527.9	277.8	183.7	299.1	104.6	392.2	538.3	294.3	385.6	633.9	245.1
85+	297.2	482.2	217.0	189.0	307.9	130.1	304.8	493.3	223.4	274.9	490.1	192.7
<b>2001</b>												
All Ages	55.3	75.2	41.0	23.8	36.8	14.5	57.7	76.6	44.0	63.4	100.5	39.4
<1	**	**	**	**	**	**	**	**	**	**	**	**
1-14	**	**	**	**	**	**	**	**	**	**	**	**
15-24	0.1	**	**	**	**	**	**	**	**	**	**	**
25-34	0.4	0.4	0.4	**	**	**	0.5	0.4	0.5	**	**	**
35-44	6.2	6.7	5.7	1.9	2.4	1.4	6.6	6.9	6.4	9.2	11.4	7.3
45-54	30.7	37.4	24.3	10.7	14.2	7.3	31.5	37.0	26.0	47.5	67.5	30.4
55-64	117.7	147.1	90.5	41.0	59.5	24.6	124.0	150.3	99.2	149.4	218.3	94.0
65-74	279.7	370.0	204.9	108.3	163.7	64.6	295.2	381.1	222.3	311.4	484.4	189.4
75-84	371.4	529.5	267.5	182.3	293.8	107.0	383.0	536.5	281.3	390.9	668.0	235.3
85+	302.7	512.4	215.0	200.7	335.2	135.0	308.6	520.0	220.6	281.6	550.9	181.8
<b>2000</b>												
All Ages	56.1	76.7	41.3	24.8	39.0	14.7	58.2	77.9	44.1	64.9	102.6	40.4
<1	**	**	**	**	**	**	**	**	**	**	**	**
1-14	**	**	**	**	**	**	**	**	**	**	**	**
15-24	0.1	**	**	**	**	**	**	**	**	**	**	**
25-34	0.5	0.5	0.5	**	**	**	0.5	0.6	0.5	0.6	**	**
35-44	6.1	6.9	5.3	1.8	2.1	1.4	6.2	6.7	5.7	10.4	13.8	7.4
45-54	31.6	38.5	25.0	10.9	14.8	7.1	32.0	37.7	26.4	51.5	72.4	33.6
55-64	122.4	154.0	93.3	39.3	58.6	22.2	129.1	157.7	102.2	155.0	227.1	97.0
65-74	284.2	377.9	206.9	110.6	167.3	66.6	298.0	387.3	222.9	320.2	495.4	196.9
75-84	370.8	532.2	265.6	198.7	327.5	112.3	381.7	537.7	279.2	379.4	649.5	227.3
85+	302.1	521.2	212.8	213.7	368.8	137.5	306.8	527.3	218.0	291.0	567.1	188.4
<b>1999</b>												
All Ages	55.5	76.9	40.2	25.0	39.6	14.6	57.2	77.7	42.7	65.7	104.3	40.6
<1	**	**	**	**	**	**	**	**	**	**	**	**
1-14	**	**	**	**	**	**	**	**	**	**	**	**
15-24	**	**	**	**	**	**	**	**	**	**	**	**
25-34	0.4	0.5	0.4	**	**	**	0.5	0.5	0.5	0.4	**	**
35-44	6.0	6.6	5.5	2.0	2.3	1.7	6.2	6.6	5.8	9.6	11.7	7.9
45-54	31.3	38.2	24.6	10.4	14.2	6.7	31.5	37.1	26.1	51.5	73.7	32.5
55-64	123.4	158.0	91.5	44.2	68.1	23.1	128.9	160.1	99.5	161.1	241.9	96.4
65-74	281.5	377.2	203.1	112.9	175.3	64.0	293.5	384.4	217.5	317.7	491.0	195.5
75-84	362.1	527.6	254.5	187.7	316.0	102.3	370.3	531.1	265.0	390.9	665.1	237.4
85+	297.0	529.2	203.5	227.3	362.3	162.2	300.5	536.9	206.2	293.3	580.0	186.1

Source: Centers for Disease Control and Prevention. National Center for Health Statistics. WONDER Online Database, compiled from Compressed Mortality File 1999-2008 Series 20 No. 2N, 2011.

Notes:

(1) Rates are per 100,000 population

(2) International Classification Of Diseases, 10th Revision (ICD-10) Code C33-C34

\*\* Number of deaths is too small to calculate a rate

**Table 5: Age-Adjusted Mortality Rates<sup>1</sup> by State and Sex, 1999-2008**

*(Continued on next page)*

State	1999			2000			2001			2002			2003		
	Total	Male	Female	Total	Male	Female	Total	Male	Female	Total	Male	Female	Total	Male	Female
Alabama	63.4	98.8	38.4	64.5	100.8	39.4	62.6	95.9	39.8	63.4	95.7	41.0	64.9	96.9	42.3
Alaska	52.4	65.9	41.0	59.5	72.0	50.9	54.4	64.2	46.6	50.7	65.1	38.6	55.7	77.4	37.5
Arizona	52.0	66.6	40.5	48.6	62.0	38.0	45.6	55.7	37.6	47.8	59.5	38.4	48.3	61.6	37.9
Arkansas	69.9	105.5	44.2	68.5	99.1	46.2	68.2	102.7	42.8	72.0	103.4	48.4	67.4	96.2	46.1
California	47.7	59.6	38.5	47.3	60.0	38.0	46.9	58.9	38.2	45.2	56.6	36.9	43.8	54.2	36.3
Colorado	39.9	52.6	30.9	41.3	51.6	33.7	41.5	51.5	34.7	42.5	54.4	33.7	41.4	53.6	32.7
Connecticut	49.8	63.7	40.2	50.6	66.3	39.8	49.4	61.9	41.2	48.4	61.3	39.8	49.1	61.0	40.9
Delaware	70.9	96.5	51.4	59.5	77.8	45.5	63.6	78.4	53.2	56.3	76.4	40.8	62.4	81.3	48.5
D.C.	53.0	75.0	38.6	57.2	73.4	43.8	55.8	82.7	37.8	58.3	86.6	38.8	51.3	73.3	36.9
Florida	58.3	78.4	42.4	57.1	75.6	42.6	56.2	72.9	43.0	55.3	71.2	42.5	54.6	70.2	42.3
Georgia	61.2	95.1	38.2	62.6	92.8	42.4	61.3	91.3	40.7	59.8	89.6	38.8	59.1	83.7	42.3
Hawaii	36.2	49.5	25.2	35.6	49.6	23.8	36.5	48.4	26.4	31.5	46.8	18.9	37.1	50.1	27.2
Idaho	43.1	57.7	32.2	45.3	59.4	34.5	44.6	57.0	34.4	42.9	57.1	32.1	46.2	55.0	40.0
Illinois	56.7	79.0	41.0	57.4	79.9	41.8	56.5	78.9	41.0	56.3	75.7	42.8	55.7	73.9	42.7
Indiana	66.1	94.3	46.5	65.8	91.4	48.0	65.1	93.4	45.3	64.8	88.0	48.8	65.6	87.4	50.0
Iowa	51.3	74.4	35.0	52.5	77.1	35.6	51.6	70.3	38.2	51.5	74.0	35.7	52.4	71.0	38.6
Kansas	54.1	76.5	37.6	52.9	74.4	37.9	56.2	77.1	41.2	53.2	71.3	40.2	53.7	72.7	39.8
Kentucky	74.6	109.2	50.4	80.2	115.8	54.1	80.8	120.0	53.5	80.3	112.4	57.5	78.5	110.7	55.3
Louisiana	66.4	99.7	42.9	67.9	99.3	45.8	68.7	100.6	45.9	66.6	95.8	45.6	66.2	94.2	46.6
Maine	60.6	79.9	47.0	62.4	80.3	49.2	58.6	79.1	44.7	63.3	81.5	50.1	62.2	79.2	50.0
Maryland	59.4	81.0	44.3	59.4	78.9	46.1	57.2	75.8	44.0	57.3	74.3	45.0	57.1	74.4	44.7
Massachusetts	54.5	73.8	41.3	56.2	73.9	44.5	54.2	68.4	45.0	55.0	69.7	45.0	54.7	67.0	45.8
Michigan	56.1	75.9	41.9	57.0	76.6	43.3	57.1	75.4	44.3	57.1	75.3	44.4	56.3	73.0	44.1
Minnesota	47.8	65.0	35.1	46.6	60.6	36.8	47.2	60.8	37.1	47.6	59.7	38.8	46.0	59.1	36.8
Mississippi	71.9	112.3	44.2	71.0	111.8	42.7	69.0	107.4	41.9	67.9	101.4	43.8	66.8	101.7	42.1
Missouri	62.9	86.4	45.8	63.5	88.4	46.1	63.1	88.3	45.1	63.1	86.7	46.2	61.9	84.0	45.9
Montana	53.8	69.0	42.0	50.3	66.4	38.4	59.0	73.6	48.2	53.0	64.6	44.5	52.6	65.6	42.6
Nebraska	52.2	73.3	36.6	48.1	65.5	35.1	52.7	72.1	38.2	49.2	67.0	35.8	47.8	64.5	35.5
Nevada	66.6	80.2	55.2	65.7	78.6	56.1	63.5	76.2	53.2	57.8	66.3	50.8	63.6	75.0	54.0
New Hampshire	58.6	77.2	45.3	54.9	70.8	43.6	52.6	64.3	44.5	55.5	66.2	48.6	52.1	66.7	41.2
New Jersey	53.3	71.6	40.4	53.4	71.1	41.6	52.7	70.4	40.7	50.5	64.8	40.9	50.9	65.5	40.9
New Mexico	39.3	51.0	30.3	39.1	52.1	29.3	37.7	49.6	28.5	39.4	52.1	30.0	39.6	51.6	30.5
New York	50.3	65.9	39.4	49.5	66.2	38.1	48.5	64.4	37.9	48.3	62.7	38.6	46.9	60.6	37.4
North Carolina	61.7	92.7	40.3	62.3	94.3	40.6	61.3	90.7	41.1	59.7	86.6	40.6	58.1	81.9	41.2
North Dakota	42.0	57.7	30.4	44.3	64.9	28.6	48.8	65.2	35.9	42.6	62.1	27.7	43.7	54.0	36.4
Ohio	61.3	85.3	44.7	61.4	85.7	44.5	60.2	84.9	42.9	62.1	83.8	46.7	60.6	82.5	44.9
Oklahoma	63.0	90.3	43.7	64.9	89.3	47.6	64.0	90.4	45.1	65.5	90.3	47.6	62.4	85.3	45.5
Oregon	54.5	68.1	44.6	58.8	72.5	49.3	54.9	66.4	46.5	56.6	66.3	49.4	55.5	67.3	46.7
Pennsylvania	55.6	77.1	40.6	55.4	76.6	40.8	54.9	76.8	39.7	54.8	73.4	41.8	53.4	72.8	39.7
Rhode Island	61.3	85.0	46.5	58.7	77.9	45.7	55.2	76.6	40.5	58.4	75.0	46.9	54.0	73.0	40.7
South Carolina	61.4	91.8	39.6	61.4	92.3	39.6	62.5	94.3	39.5	60.1	90.1	39.1	62.0	89.4	41.7
South Dakota	50.7	75.5	31.0	47.2	68.2	31.7	49.8	71.9	33.0	47.8	63.6	36.1	47.7	66.5	33.9
Tennessee	68.8	105.9	42.6	69.1	103.2	44.8	68.8	104.2	43.4	69.3	101.7	46.4	67.5	96.6	47.1
Texas	55.4	77.5	39.5	56.0	79.0	39.2	53.8	74.9	38.4	55.2	75.9	39.9	53.4	73.2	38.9
Utah	26.6	36.5	19.1	26.3	39.6	16.2	23.2	34.0	14.5	24.5	32.0	18.7	24.3	33.2	17.2
Vermont	57.6	84.0	39.1	53.4	69.9	41.0	53.9	77.5	37.3	48.6	61.5	39.6	48.3	58.2	40.7
Virginia	60.0	85.2	42.0	59.1	82.7	42.7	56.2	75.1	43.1	57.2	78.9	42.0	57.3	76.8	43.0
Washington	57.5	72.0	46.7	57.6	70.9	47.9	55.2	68.1	45.9	54.3	66.7	45.2	55.2	66.1	47.5
West Virginia	73.6	104.1	52.6	73.8	104.2	52.0	72.0	94.2	55.8	69.9	96.0	50.2	66.6	90.4	49.1
Wisconsin	49.3	67.0	36.4	48.4	67.0	35.4	49.3	65.1	37.9	49.7	64.0	39.8	47.5	63.7	36.2
Wyoming	52.5	63.5	44.0	49.2	63.9	38.5	48.4	62.8	37.5	49.3	60.8	40.0	49.0	65.1	36.7
<b>U.S. Total</b>	<b>56.0</b>	<b>77.0</b>	<b>40.8</b>	<b>56.5</b>	<b>76.6</b>	<b>41.8</b>	<b>55.3</b>	<b>75.2</b>	<b>41.0</b>	<b>54.9</b>	<b>73.2</b>	<b>41.6</b>	<b>54.1</b>	<b>71.6</b>	<b>41.2</b>

Source: Centers for Disease Control and Prevention. National Center for Health Statistics. CDC Wonder On-line Database, compiled from Compressed Mortality File 1999-2008 Series 20 No. 2N, 2011.

Notes:

(1) Rates are per 100,000 persons, age-adjusted to the 2000 U.S. population and coded by ICD-10 revision.

**Table 5 continued: Age-Adjusted Mortality Rates<sup>1</sup> by State and Sex, 1999-2008**

State	2004			2005			2006			2007			2008		
	Total	Male	Female	Total	Male	Female	Total	Male	Female	Total	Male	Female	Total	Male	Female
Alabama	62.7	91.6	42.4	63.8	92.8	42.9	60.2	88.5	39.9	61.6	90.3	40.9	58.8	85.9	38.8
Alaska	57.4	65.9	50.2	51.0	58.4	44.7	46.2	49.4	43.7	55.2	68.4	43.4	53.0	60.5	47.2
Arizona	46.2	57.8	37.1	43.3	53.6	34.8	43.0	53.1	34.7	39.4	48.5	31.8	38.6	47.6	31.3
Arkansas	68.9	95.8	49.3	70.4	98.1	49.6	65.4	92.6	45.0	63.7	84.5	47.6	67.8	95.5	46.3
California	42.3	52.2	34.9	41.5	50.9	34.6	40.3	49.8	33.2	39.4	48.3	32.8	38.1	46.4	31.9
Colorado	39.1	47.7	33.3	38.5	46.2	33.2	37.9	45.4	32.8	45.9	44.8	32.1	36.5	44.7	30.5
Connecticut	49.8	64.7	39.1	47.2	58.8	39.0	47.1	56.8	40.6	57.0	54.2	40.3	43.8	54.5	36.3
Delaware	65.9	85.5	51.3	62.4	79.7	49.6	59.7	70.1	52.0	63.8	66.0	50.4	58.0	69.2	49.5
D.C.	50.7	72.0	35.8	49.4	69.6	36.6	47.1	70.6	30.6	45.9	60.2	37.6	49.6	67.5	37.1
Florida	54.1	68.7	42.5	52.7	68.5	40.0	51.3	65.8	39.4	64.4	60.6	39.3	48.9	61.4	38.6
Georgia	58.4	85.6	39.1	56.3	80.4	39.3	55.8	79.6	38.9	47.0	76.2	39.6	50.9	69.9	37.5
Hawaii	37.5	51.0	27.1	40.0	52.5	29.7	38.7	51.9	27.9	36.1	49.8	25.4	35.8	49.6	25.1
Idaho	40.8	50.8	32.8	45.3	58.2	35.4	42.0	51.0	34.7	41.4	51.2	33.8	41.9	48.0	37.0
Illinois	54.6	72.8	41.7	52.6	68.8	41.2	52.5	69.1	41.1	53.8	68.2	43.7	52.1	66.9	41.7
Indiana	60.8	82.2	45.3	63.0	83.6	48.2	61.8	82.4	47.4	61.0	80.8	46.7	62.1	81.9	48.0
Iowa	53.7	72.8	39.8	54.0	73.5	40.1	49.4	67.1	36.3	52.4	67.6	41.1	50.5	66.1	39.1
Kansas	54.1	72.4	40.3	57.0	72.7	46.1	54.8	71.1	42.8	51.3	70.0	37.6	51.8	69.5	38.1
Kentucky	77.0	105.6	56.8	77.2	106.7	56.0	74.4	101.0	55.6	74.4	100.4	55.6	74.2	98.9	55.6
Louisiana	66.7	95.0	46.2	64.3	90.2	45.6	61.5	84.8	44.3	58.9	80.4	43.3	60.1	83.1	43.7
Maine	61.0	77.8	48.9	60.0	77.3	47.4	61.2	77.4	49.5	56.4	70.2	46.7	56.7	73.4	44.4
Maryland	52.9	67.6	42.3	54.9	71.0	43.4	52.7	66.6	42.7	50.1	62.9	41.1	50.1	64.1	40.2
Massachusetts	52.1	65.0	43.5	52.1	64.4	43.8	52.7	66.3	43.4	50.7	62.4	42.8	49.3	61.0	41.4
Michigan	56.6	74.2	44.0	55.7	72.6	43.2	55.2	70.6	44.0	55.4	70.1	45.0	54.4	68.5	44.2
Minnesota	46.8	59.0	37.9	44.5	57.0	35.6	45.0	56.3	37.1	45.6	57.7	36.7	45.3	53.7	39.1
Mississippi	68.1	99.6	45.3	64.2	94.3	42.8	67.6	100.0	44.2	64.3	97.8	40.4	65.3	96.9	42.8
Missouri	65.2	89.7	47.6	62.2	85.2	45.3	62.0	81.6	47.7	60.1	78.8	46.3	60.1	79.4	45.7
Montana	48.9	56.0	43.3	52.7	64.0	44.2	48.2	58.0	40.3	51.3	58.9	45.8	48.1	59.6	39.0
Nebraska	47.4	66.1	33.4	48.5	63.7	37.3	47.7	65.9	34.5	48.8	65.5	36.2	45.3	56.9	36.4
Nevada	57.2	61.2	53.3	57.6	66.4	50.4	56.0	64.8	48.4	53.7	59.7	48.4	53.5	60.0	48.1
New Hampshire	55.1	67.9	45.4	53.7	67.8	43.4	51.4	61.9	44.2	52.9	59.9	47.8	47.5	59.4	38.7
New Jersey	48.5	60.7	40.1	48.0	61.1	39.0	47.1	58.7	39.0	47.0	58.9	38.9	45.1	55.9	37.7
New Mexico	35.8	44.5	28.9	36.5	45.5	29.5	35.0	43.2	28.4	37.8	46.1	31.1	36.2	46.0	28.2
New York	45.9	58.4	37.2	45.3	57.6	36.7	44.1	56.3	35.6	44.2	54.9	36.8	43.1	53.7	35.7
North Carolina	59.1	83.9	41.2	59.6	82.6	43.1	59.6	82.7	43.1	56.4	79.7	41.9	56.3	77.0	41.4
North Dakota	48.6	66.5	35.7	43.1	55.0	34.1	48.2	64.2	36.1	40.9	52.4	32.3	45.2	56.6	37.5
Ohio	60.2	79.6	46.3	59.3	79.2	44.9	59.3	80.0	44.8	58.9	77.7	45.5	57.2	75.1	44.3
Oklahoma	63.0	84.7	46.6	62.6	85.6	45.4	63.5	82.2	49.3	63.9	85.4	48.2	60.0	80.5	44.6
Oregon	54.8	65.5	46.6	54.0	66.2	44.9	53.2	62.4	46.4	49.8	58.8	42.9	49.8	59.9	41.6
Pennsylvania	53.2	70.4	40.9	54.2	73.3	40.8	52.7	70.0	40.5	52.0	68.4	40.3	51.6	67.3	40.6
Rhode Island	55.2	74.2	42.0	50.4	62.0	43.0	49.8	64.2	40.2	54.6	71.4	43.8	56.7	69.5	48.1
South Carolina	57.8	84.5	38.6	60.5	85.9	41.9	58.5	81.9	41.4	56.4	78.6	39.9	55.8	78.7	38.8
South Dakota	49.5	68.4	34.8	53.2	67.9	42.1	48.2	62.2	38.1	46.4	63.4	33.8	47.3	65.6	33.1
Tennessee	68.1	97.6	47.0	69.8	97.7	49.5	67.7	95.1	47.9	65.7	91.1	47.3	63.3	87.9	45.5
Texas	51.9	69.8	38.7	50.3	68.5	36.9	49.2	65.5	37.0	47.4	63.0	35.9	46.0	60.0	35.4
Utah	26.1	35.4	18.5	23.8	33.4	15.8	23.3	29.6	18.1	21.9	26.2	18.4	17.9	23.0	13.8
Vermont	47.4	63.9	35.0	49.0	58.3	42.7	49.8	57.0	44.6	56.2	67.4	48.3	52.4	62.5	44.6
Virginia	55.8	74.6	42.2	56.5	76.1	42.1	54.3	71.8	41.5	52.9	69.7	41.2	50.7	67.8	38.4
Washington	51.8	63.0	43.5	51.2	61.4	43.8	49.3	59.1	41.9	49.5	56.3	44.4	47.9	56.6	41.6
West Virginia	65.8	90.8	48.3	66.7	89.8	50.0	70.7	93.3	53.6	66.3	87.2	50.7	64.0	81.6	50.8
Wisconsin	50.0	66.2	38.2	48.5	61.0	39.7	47.8	58.8	39.8	48.3	61.0	38.8	47.0	57.9	39.1
Wyoming	39.8	50.1	31.7	48.0	53.9	42.5	44.7	54.3	38.5	46.0	52.0	41.7	41.3	48.0	35.6
<b>U.S. Total</b>	<b>53.2</b>	<b>70.0</b>	<b>40.9</b>	<b>52.6</b>	<b>69.0</b>	<b>40.5</b>	<b>51.5</b>	<b>67.1</b>	<b>40.0</b>	<b>50.6</b>	<b>65.1</b>	<b>40.0</b>	<b>49.5</b>	<b>63.6</b>	<b>39.0</b>

Source: Centers for Disease Control and Prevention. National Center for Health Statistics. CDC Wonder On-line Database, compiled from Compressed Mortality File 1999-2008 Series 20 No. 2N, 2011.

Notes:

(1) Rates are per 100,000 persons, age-adjusted to the 2000 U.S. population and coded by ICD-10 revision.

**Table 6: Age-Adjusted Mortality Rates<sup>1</sup> by State and Race, 1999-2008**

*(Continued on next page)*

State	1999				2000				2001				2002				2003			
	All	White	Black	Other <sup>2</sup>	All	White	Black	Other <sup>2</sup>	All	White	Black	Other <sup>2</sup>	All	White	Black	Other <sup>2</sup>	All	White	Black	Other <sup>2</sup>
Alabama	63.4	64.1	61.2	13.5*	64.5	65.4	62.1	6.4*	62.6	63.4	59.6	47.0*	63.4	63.4	64.4	20.3*	64.9	67.3	56.3	18.4*
Alaska	52.4	56.9	7.1*	40.7	59.5	59.5	54.0*	59.3	54.4	52.5	60.0*	62.7	50.7	49.5	67.1*	52.9	55.7	56.6	50.7*	53.6
Arizona	52.0	53.5	40.1	16.9	48.6	49.5	68.2	14.8	45.6	46.5	54.0	18.7	47.8	49.1	57.1	14.2	48.3	49.7	54.8	14.8
Arkansas	69.9	69.9	72.6	11.2*	68.5	68.2	71.5	34.6*	68.2	69.3	61.0	35.3*	72.0	72.7	68.8	26.9*	67.4	67.5	68.0	30.5*
California	47.7	48.6	61.7	32.1	47.3	48.7	61.2	29.9	46.9	48.1	63.2	31.1	45.2	46.9	58.4	27.7	43.8	45.1	58.1	29.4
Colorado	39.9	39.9	51.1	22.5*	41.3	41.5	49.4	24.6	41.5	41.3	65.0	24.2*	42.5	42.8	58.1	19.7*	41.4	41.3	57.3	30.1
Connecticut	49.8	50.2	48.3	19.1*	50.6	50.5	61.6	10.7*	49.4	49.7	51.6	22.5*	48.4	48.9	45.8	26.7*	49.1	49.9	43.6	11.1*
Delaware	70.9	65.5	89.0	42.8*	59.5	60.2	61.6	10.7*	63.6	62.9	72.5	16.8*	56.3	56.7	57.8	15.2*	62.4	61.4	73.1	14.8*
D.C.	53.0	37.2	63.6	6.3*	57.2	35.9	68.7	14.4*	55.8	42.0	64.0	17.5*	58.3	38.1	69.5	27.1*	51.3	36.4	60.9	12.0*
Florida	58.3	58.9	56.9	16.5	57.1	58.0	50.6	16.5	56.2	57.3	50.6	17.7	55.3	56.4	48.6	18.9	54.6	55.7	47.1	18.5
Georgia	61.2	62.0	60.7	9.4*	62.6	64.9	55.2	18.3	61.3	63.2	56.5	20.7*	59.8	61.2	56.5	23.4	59.1	60.6	56.1	23.5
Hawaii	36.2	38.6	20.5*	35.9	35.6	44.2	25.0*	32.7	36.5	38.6	35.2*	35.8	31.5	36.3	24.7*	30.2	37.1	44.3	32.1*	34.5
Idaho	43.1	43.1	158.0*	24.1*	45.3	45.5	56.4*	30.5*	44.6	45.1	0.0*	13.3*	42.9	43.2	98.4*	21.0*	46.2	46.4	137.0*	27.6*
Illinois	56.7	55.1	76.7	17.5	57.4	55.7	75.2	27.7	56.5	55.8	71.0	19.2	56.3	55.0	73.0	22.2	55.7	54.9	69.0	19.3
Indiana	66.1	65.2	86.0	12.9*	65.8	65.7	71.7	11.6*	65.1	64.7	76.7	14.9*	64.8	63.9	86.5	8.5*	65.6	65.0	79.2	25.3*
Iowa	51.3	51.2	85.8	14.1*	52.5	52.3	90.4	32.3*	51.6	51.4	88.2	27.0*	51.5	51.5	86.9	25.3*	52.4	52.3	72.0	33.0*
Kansas	54.1	53.6	69.4	43.2*	52.9	52.8	59.6	38.3*	56.2	55.2	87.5	34.8*	53.2	53.1	62.3	31.6*	53.7	54.1	51.9	41.9*
Kentucky	74.6	74.4	83.5	3.8*	80.2	79.6	94.2	43.9*	80.8	80.9	87.4	12.6*	80.3	80.8	80.0	4.3*	78.5	78.3	86.5	16.6*
Louisiana	66.4	63.6	76.2	11.5*	67.9	66.1	73.9	31.8*	68.7	67.3	74.1	18.1*	66.6	64.5	73.3	34.5*	66.2	65.1	70.3	28.4*
Maine	60.6	60.7	30.0*	67.8*	62.4	62.5	75.9*	57.2*	58.6	58.8	55.4*	52.0*	63.3	62.9	96.4*	153.0*	62.2	62.1	108.7*	92.1*
Maryland	59.4	58.9	67.4	17.1	59.4	58.9	64.7	27.0	57.2	57.1	62.8	20.5	57.3	56.4	64.7	20.8	57.1	56.4	64.1	25.5
Massachusetts	54.5	54.7	61.7	30.2	56.2	56.9	54.7	19.6	54.2	55.1	45.8	27.2	55.0	56.1	46.7	27.5	54.7	55.3	52.9	35.6
Michigan	56.1	54.5	68.6	57.5	57.0	55.9	67.0	43.6	57.1	55.7	69.4	48.1	57.1	55.9	68.8	37.1	56.3	55.1	68.4	42.0
Minnesota	47.8	47.4	84.0	46.8	46.0	46.0	103.9	37.6	47.2	46.8	66.4	50.7	47.6	48.1	35.7	23.3	46.0	45.8	59.2	43.3
Mississippi	71.9	71.9	71.7	34.0*	71.0	71.8	69.2	35.2*	69.0	70.1	66.6	6.8*	67.9	68.1	68.3	26.1*	66.8	67.3	65.6	19.2*
Missouri	62.9	62.0	77.2	29.9*	63.5	62.7	76.7	35.8*	63.1	62.4	75.3	23.9*	63.1	62.4	75.3	28.8*	61.9	61.4	72.5	21.3*
Montana	53.8	52.3	0.0*	103.5	50.3	49.5	74.2*	85.1	59.0	57.6	59.8*	108.4	53.0	51.6	119.8*	87.7	52.6	52.3	0.0*	74.2
Nebraska	52.2	51.6	75.7	38.6*	48.1	47.7	68.5	25.1*	52.7	52.3	78.4	47.8*	49.2	48.8	59.7	67.5*	47.8	46.1	121.8	51.1*
Nevada	66.6	68.9	60.9	29.6	65.7	67.8	67.4	27.9	63.5	65.1	70.7	29.2	57.8	60.0	53.0	23.3	63.6	66.8	51.3	24.4
New Hampshire	58.6	59.0	54.2*	17.6*	54.9	55.0	142.6*	0.0*	52.6	53.0	43.2*	9.5*	55.5	55.8	12.7*	45.7*	52.1	52.3	54.4*	12.2*
New Jersey	53.3	53.8	61.2	13.4	53.4	53.8	61.1	17.5	52.7	53.1	61.4	18.3	50.5	51.1	56.2	19.3	50.9	51.5	58.0	19.9
New Mexico	39.3	41.2	29.5*	11.7*	39.1	40.5	42.2*	16.0*	37.7	39.3	48.8*	12.4*	39.4	41.3	55.4*	9.1*	39.6	41.6	54.0*	9.5*
New York	50.3	52.2	44.4	28.0	49.5	51.4	43.8	26.5	48.5	50.7	43.1	22.1	48.3	50.6	42.2	22.1	46.9	49.0	41.2	23.3
North Carolina	61.7	61.6	63.1	42.2	62.3	62.8	61.4	36.0	61.3	61.3	62.3	42.0	59.7	59.4	63.5	28.4	58.1	59.1	55.7	24.4
North Dakota	42.0	41.0	28.7*	94.5*	44.3	44.0	91.8*	75.1*	48.8	47.4	0.0*	116.2*	42.6	42.1	0.0*	60.2*	43.7	43.0	0.0*	74.1*
Ohio	61.3	60.2	76.8	29.7	61.4	59.7	83.1	22.6*	60.2	59.6	71.0	24.6	62.1	61.9	68.2	19.0	60.6	59.8	72.7	21.9
Oklahoma	63.0	62.0	61.6	36.3	64.9	66.3	69.2	43.4	64.0	66.0	59.8	40.1	65.5	66.4	75.3	45.1	62.4	63.3	78.1	39.2
Oregon	54.5	54.5	64.7	47.7	58.8	59.5	72.0	29.2	54.9	55.6	60.5	35.6	56.6	57.4	40.3*	39.0	55.5	56.1	76.9	32.3
Pennsylvania	55.6	53.9	81.5	16.1*	55.4	54.4	72.4	16.4	54.9	54.0	72.5	15.8	54.8	53.7	72.3	23.3	53.4	52.7	67.3	19.3
Rhode Island	61.3	61.7	62.4*	20.2*	58.7	59.8	59.7*	4.0*	55.2	55.3	50.0*	43.4*	58.4	58.8	57.5	34.5*	54.0	54.6	49.0*	31.5*
South Carolina	61.4	61.8	60.1	24.3*	61.4	62.2	58.6	30.0*	62.5	64.0	57.0	24.0*	60.1	61.4	55.4	34.9*	62.0	62.1	62.0	21.3*
South Dakota	50.7	49.3	33.5*	100.2	47.2	45.5	0.0*	90.2	49.8	49.2	152.4*	61.7*	47.8	47.5	0.0*	65.6*	47.7	47.6	0.0*	60.5*
Tennessee	68.8	67.7	79.1	29.2*	69.1	68.7	74.9	25.1*	68.8	68.4	75.5	22.4*	69.3	69.2	71.8	29.5*	67.5	67.4	70.9	16.4*
Texas	55.4	54.5	70.3	22.2	56.0	54.8	73.7	24.3	53.8	53.0	69.3	23.2	55.2	54.6	69.5	19.1	53.4	52.6	69.9	21.8
Utah	26.6	26.6	28.9*	29.3*	26.3	26.5	0.0*	23.2*	23.2	23.3	26.7*	17.2*	24.5	24.5	14.4*	30.7	24.3	24.2	59.6*	22.5*
Vermont	57.6	58.0	0.0*	0.0*	53.4	53.5	70.3*	56.1*	53.9	54.4	0.0*	0.0*	48.6	48.9	0.0*	46.7*	48.3	48.7	0.0*	0.0*
Virginia	60.0	59.5	67.6	27.0	59.1	59.0	65.0	25.1	56.2	56.6	60.2	23.4	57.2	56.8	65.0	26.2	57.3	57.0	64.6	21.9
Washington	57.5	59.0	56.7	26.4	57.6	59.0	62.8	32.3	55.2	56.3	63.4	36.7	54.3	55.0	76.8	34.2	55.2	56.6	60.6	34.5
West Virginia	73.6	74.6	47.9	0.0*	73.8	74.3	63.8	6.4*	72.0	72.6	63.6	5.9*	69.9	70.3	63.5	5.5*	66.6	67.2	54.8	5.9*
Wisconsin	49.3	48.5	74.9	41.9	48.4	47.8	72.8	20.7*	49.3	48.6	78.0	31.9	49.7	49.0	70.9	38.0	47.5	46.6	88.2	29.6*
Wyoming	52.5	52.7	0.0*	64.5*	49.2	48.9	58.2*	54.5*	48.4	48.8	0.0*	33.2*	49.3	49.7	0.0*	37.1*	49.0	48.8	95.1*	38.4*
<b>U.S. Total<sup>3</sup></b>	<b>55.5</b>	<b>55.4</b>	<b>64.8</b>	<b>29.2</b>	<b>56.1</b>	<b>56.2</b>	<b>64.0</b>	<b>28.7</b>	<b>55.3</b>	<b>55.6</b>	<b>62.5</b>	<b>29.2</b>	<b>54.9</b>	<b>55.2</b>	<b>61.9</b>	<b>26.7</b>	<b>54.1</b>	<b>54.5</b>	<b>60.8</b>	<b>27.6</b>

Source: Centers for Disease Control and Prevention. National Center for Health Statistics. CDC Wonder On-line Database, compiled from Compressed Mortality File 1999-2008 Series 20 No. 2N, 2011.

Notes:

(1) Rates are per 100,000 persons, age-adjusted to the 2000 U.S. population and coded by ICD-10 revision.

(2) Includes races other than white and black.

(3) Due to rounding, U.S. total rates presented in this table may differ from those in Table 2.

\* These rates should be interpreted with caution as they represent 20 or fewer deaths.

\*\* Rates have been suppressed due to confidentiality constraints.

**Table 6 continued: Age-Adjusted Mortality Rates<sup>1</sup> by State and Race, 1999-2008**

State	2004				2005				2006				2007				2008			
	All	White	Black	Other <sup>2</sup>	All	White	Black	Other <sup>2</sup>	All	White	Black	Other <sup>2</sup>	All	White	Black	Other <sup>2</sup>	All	White	Black	Other <sup>2</sup>
Alabama	62.7	64.6	56.9	16.4*	63.8	64.9	61.3	16.4*	60.2	61.7	54.8	25.1*	61.6	63.0	57.5	**	60.1	61.6	54.6	**
Alaska	57.4	55.7	75.7*	61.4	51.0	48.3	47.9*	61.6	46.2	45.9	32.5*	49.4	55.2	50.6	**	71.9	46.6	46.3	**	50.0
Arizona	46.2	47.4	53.6	17.3	43.3	44.8	42.2	8.6	43.0	44.6	45.5	8.8	39.4	40.5	43.8	14.2	43.1	44.7	45.1	8.7
Arkansas	68.9	69.9	65.1	15.1*	70.4	70.5	74.1	24.3*	65.4	65.6	67.4	31.6*	63.7	64.4	61.3	**	65.3	65.5	67.5	**
California	42.3	43.8	54.3	27.3	41.5	42.9	56.7	26.7	40.3	41.5	56.6	26.4	39.4	40.6	53.5	26.4	40.2	41.5	56.8	26.1
Colorado	39.1	39.5	45.5	17.6*	38.5	38.5	40.3	33.7	37.9	37.9	47.7	28.3	37.5	37.9	43.3	18.4	38.0	38.1	47.5	28.9
Connecticut	49.8	50.7	47.6	13.5*	47.2	48.2	37.6	18.9*	47.1	47.8	44.5	10.7*	45.9	46.6	40.8	19.6*	46.9	47.7	44.2	**
Delaware	65.9	66.5	63.4	32.4*	62.4	61.2	72.9	28.6*	59.7	59.3	65.0	33.6*	57.0	58.3	50.4	**	59.7	59.3	65.1	**
D.C.	50.7	36.3	60.1	26.2*	49.4	26.8	62.2	26.6*	47.1	31.3	55.8	37.2*	46.6	37.3	53.7	**	46.5	30.8	55.2	**
Florida	54.1	55.0	48.6	21.8	52.7	54.0	44.2	22.2	51.3	52.2	45.2	19.9	48.9	50.1	42.7	18.5	51.2	52.2	45.3	20.0
Georgia	58.4	60.4	53.9	20.0	56.3	58.3	51.9	16.6	55.8	58.7	47.7	17.3	54.6	56.5	50.6	24.1	55.7	58.6	47.6	16.8
Hawaii	37.5	37.7	22.9*	37.8	40.0	52.6	5.6*	36.1	38.7	41.1	26.2*	38.4	36.1	42.7	**	33.9	38.7	40.5	**	38.6
Idaho	40.8	41.2	73.6*	13.2*	45.3	45.4	63.2*	40.9*	42.0	42.1	18.1*	37.6*	41.4	42.1	**	**	42.0	42.1	**	**
Illinois	54.6	53.9	67.4	21.4	52.6	51.6	67.4	18.6	41.1	51.6	66.0	24.6	53.8	52.8	69.8	20.9	52.5	51.6	65.9	24.6
Indiana	60.8	60.7	67.9	10.9*	63.0	63.2	67.6	8.9*	47.4	61.5	73.1	7.0*	61.0	60.8	72.1	**	61.7	61.5	72.9	**
Iowa	53.7	53.5	85.6	48.4*	54.0	53.9	77.0	57.4*	36.3	49.4	75.1	8.3*	52.4	52.4	80.0	**	49.3	49.3	75.9	**
Kansas	54.1	53.6	69.2	55.7	57.0	56.7	75.5	44.9	42.8	54.2	75.1	49.9	51.3	51.2	46.7	61.9	54.7	54.1	75.5	50.1
Kentucky	77.0	77.1	82.5	18.2*	77.2	77.8	74.1	24.5*	55.6	74.0	90.1	14.3*	74.4	74.9	74.5	**	74.4	74.0	91.4	**
Louisiana	66.7	65.0	73.1	17.8*	64.3	62.8	69.7	30.3*	44.3	61.4	63.3	15.2*	58.9	57.8	63.8	22.9*	60.8	60.8	62.3	**
Maine	61.0	61.2	0.0*	54.1*	60.0	60.3	24.1*	31.4*	49.5	61.3	0.0*	65.4*	56.4	56.6	**	**	61.0	61.1	**	**
Maryland	52.9	53.2	57.4	16.1	54.9	56.0	55.4	27.0	42.7	53.8	53.4	20.9	50.1	51.4	51.2	18.0	52.7	53.9	53.1	20.7
Massachusetts	52.1	53.2	47.1	23.1	52.1	52.9	52.3	23.8	43.4	53.7	47.0	29.8	50.7	51.8	43.5	23.4	52.7	53.7	46.6	29.4
Michigan	56.6	55.5	67.9	34.4	55.7	55.3	61.1	36.9	55.2	53.9	68.8	30.3	55.4	54.9	62.2	30.7	55.4	54.0	69.1	30.0
Minnesota	46.8	46.7	52.2	43.2	44.5	44.1	73.0	35.5	45.0	44.9	54.9	37.5	45.6	45.4	57.5	39.8	45.0	44.9	54.5	37.4
Mississippi	68.1	67.4	69.8	20.1*	64.2	64.2	63.6	51.3*	67.6	66.1	70.7	24*	64.3	65.7	59.9	**	67.2	65.7	70.2	**
Missouri	65.2	64.3	80.8	31.5*	62.2	61.9	70.6	19.2*	62.0	61.8	70.2	22.5*	60.1	60.1	65.3	27.2	62.0	61.8	70.7	**
Montana	48.9	48.9	0.0*	50.7*	52.7	52.8	81.5*	46.2*	48.2	47.4	35.9*	67.3	51.3	50.6	**	72.8	48.3	47.5	**	69.0
Nebraska	47.4	46.7	71.2	48.7*	48.5	48.4	65.2	33.7*	47.7	47.6	61.3	18.7*	48.8	48.8	59.0	**	47.7	47.5	61.1	**
Nevada	57.2	59.9	43.0	29.3	57.6	59.9	53.6	29.3	56.0	58.7	53.0	26.3	53.7	57.2	41.4	21.6	56.1	58.7	52.4	26.7
New Hampshire	55.1	55.6	8.9*	24.2*	53.7	54.1	34.4*	43.6*	51.4	52.0	7.4*	7.8*	52.9	53.4	**	**	51.4	52.0	**	**
New Jersey	48.5	49.2	56.0	19.5	48.0	49.3	51.7	13.3	47.1	48.3	49.9	17.4	47.0	49.2	44.0	15.5	47.0	48.3	49.6	16.8
New Mexico	35.8	37.3	34.8*	14.5	36.5	38.5	28.2*	10.8*	35.0	36.5	35.1*	14.9	37.8	39.7	40.3*	14.5	34.9	36.5	**	14.8
New York	45.9	48.0	39.8	25.4	45.3	47.3	40.3	22.8	44.1	46.7	37.1	22.0	44.2	46.6	37.7	23.8	44.2	46.8	37.2	22.0
North Carolina	59.1	59.5	57.3	47.1	59.6	60.5	56.6	43.0	59.6	60.2	59.1	28.5	57.7	57.9	57.0	39.1	59.6	60.2	59.1	28.1
North Dakota	48.6	46.8	0.0*	119.8	43.1	41.1	278.0*	113.7	48.2	47.3	0.0*	89.0*	40.9	39.5	**	97.4*	48.1	47.2	**	**
Ohio	60.2	59.2	74.6	12.0*	59.3	58.5	72.8	15.5	59.3	59.0	67.7	17.6	58.9	58.1	70.8	18.1	59.4	59.0	67.7	17.8
Oklahoma	63.0	64.0	66.0	48.2	62.6	62.7	66.9	57.5	63.5	64.8	63.7	44.9	63.9	65.2	63.5	48.4	63.4	64.8	64.1	44.6
Oregon	54.8	55.3	71.0	31.5	54.0	55.2	50.3	23.1	53.2	54.0	53.4	32.5	49.8	50.7	51.0	27.8	53.2	53.9	53.4	32.5
Pennsylvania	53.2	51.9	73.0	23.8	54.2	53.4	68.8	23.1	52.7	51.9	68.8	16.8	52.0	51.1	69.1	20.2	52.6	51.9	68.3	16.7
Rhode Island	55.2	56.2	50.5*	7.5*	50.4	50.5	64.5	33.2*	49.8	50.3	55.7*	24.9*	54.6	54.6	54.6	47.8*	49.5	50.1	**	**
South Carolina	57.8	60.1	50.9	19.7*	60.5	62.4	53.9	44.3*	58.5	59.4	55.5	30.8*	56.4	57.1	54.9	**	58.6	59.4	55.6	**
South Dakota	49.5	47.6	182.7*	82.1	53.2	52.8	0.0*	71.9	48.2	47.0	12.9*	81.6	46.4	45.7	**	65.2	48.6	47.4	**	84.4
Tennessee	68.1	67.7	72.9	34.5*	69.8	69.2	78.0	22.1*	67.7	67.6	72.8	23.1*	65.7	66.2	65.6	22.3	68.1	67.9	73.5	**
Texas	51.9	50.9	69.3	21.5	50.3	49.6	67.1	20.4	49.2	49.0	59.2	19.5	47.4	46.8	59.7	24.7	49.1	49.0	59.4	19.0
Utah	26.1	26.0	50.8*	26.7*	23.8	23.7	37.2*	26.7*	23.3	22.9	62.9*	27.9*	21.9	21.5	**	27.2	23.4	23.1	**	**
Vermont	47.4	47.8	0.0*	0.0*	49.0	49.4	48.6*	0.0*	49.8	50.1	29.1*	9.6*	56.2	56.8	**	**	49.7	50.0	**	**
Virginia	55.8	55.3	64.8	23.9	56.5	56.7	62.4	22.7	54.3	55.1	57.0	20.4	52.9	52.0	63.4	28.4	54.1	54.9	57.1	20.1
Washington	51.8	53.3	45.4	31.4	51.2	52.6	52.2	32.3	49.3	50.3	57.7	31.4	49.5	50.6	57.6	30.9	49.3	50.3	57.5	31.3
West Virginia	65.8	66.6	53.1	0.0*	66.7	67.4	53.5	12.3*	70.7	71.2	60.6	19.1*	66.3	67.1	53.4	**	70.5	71.0	61.0	**
Wisconsin	50.0	48.7	86.4	52.9	48.5	47.7	76.6	36.2	47.8	47.2	70.9	32.3	48.3	47.5	69.6	46.1	48.0	47.4	71.1	32.5
Wyoming	39.8	39.9	0.0*	57.2*	48.0	48.1	80.0*	35.1*	44.7	44.4	42.3*	63.3*	46.0	45.9	**	**	44.6	44.4	**	**
<b>U.S. Total<sup>3</sup></b>	<b>53.2</b>	<b>53.6</b>	<b>59.8</b>	<b>27.7</b>	<b>52.6</b>	<b>53.1</b>	<b>58.4</b>	<b>27.0</b>	<b>51.5</b>	<b>52.1</b>	<b>56.8</b>	<b>26.1</b>	<b>50.6</b>	<b>51.2</b>	<b>55.6</b>	<b>26.4</b>	<b>51.5</b>	<b>52.1</b>	<b>56.8</b>	<b>26.1</b>

Source: Centers for Disease Control and Prevention. National Center for Health Statistics. CDC Wonder On-line Database, compiled from Compressed Mortality File 1999-2008 Series 20 No. 2N, 2011.

Notes:

(1) Rates are per 100,000 persons, age-adjusted to the 2000 U.S. population and coded by ICD-10 revision.

(2) Includes races other than white and black.

(3) Due to rounding, U.S. total rates presented in this table may differ from those in Table 2.

\* These rates should be interpreted with caution as they represent 20 or fewer deaths.

\*\* Rates have been suppressed due to confidentiality constraints.

**Table 7: Prevalence Counts<sup>1, 2</sup> by Race, Sex and Years Since Diagnosis, 2000-2008**

Years Since Diagnosis	All Races			White <sup>3</sup>			Black <sup>3</sup>			Hispanics <sup>4</sup>			Asian/Pacific Islander <sup>5</sup>		
	Total	Male	Female	Total	Male	Female	Total	Male	Female	Total	Male	Female	Total	Male	Female
Total															
2008	373,489	173,428	200,061	320,145	145,820	174,325	35,947	17,801	18,146	NA	NA	NA	NA	NA	NA
2007	370,617	172,739	197,878	317,797	145,246	172,551	35,685	17,728	17,957	NA	NA	NA	NA	NA	NA
2006	364,996	171,522	193,474	312,993	144,370	168,623	35,285	17,524	17,761	NA	NA	NA	NA	NA	NA
2005	360,081	172,426	187,655	309,192	145,127	164,065	34,332	17,626	16,706	NA	NA	NA	NA	NA	NA
2004	358,128	174,880	183,248	307,114	146,722	160,392	34,647	18,429	16,218	NA	NA	NA	NA	NA	NA
2003	351,344	171,560	179,784	300,884	144,156	156,728	34,434	17,789	16,645	NA	NA	NA	NA	NA	NA
0 to <5															
2008	214,402	101,209	113,193	184,129	85,874	98,255	22,189	11,030	11,159	6,635	3,432	3,203	6,278	3,349	2,929
2007	213,542	100,425	113,117	183,440	85,221	98,219	22,255	11,033	11,222	6,506	3,341	3,165	5,962	3,109	2,853
2006	209,050	98,835	110,215	179,953	84,397	95,556	21,763	10,526	11,237	6,284	3,314	2,970	5,727	3,052	2,675
2005	206,013	99,962	106,051	177,913	85,424	92,489	20,971	10,688	10,283	6,338	3,127	3,211	5,287	2,887	2,400
2004	206,480	101,519	104,961	178,187	86,324	91,863	21,464	11,492	9,972	5,693	3,027	2,666	4,900	2,691	2,209
2003	204,290	99,565	104,725	176,378	85,040	91,338	21,525	11,024	10,501	5,392	2,886	2,506	4,533	2,519	2,014
5 to <10															
2008	69,655	31,015	38,640	61,258	26,864	34,394	6,066	2,881	3,185	1,939	993	946	1,603	789	814
2007	69,437	30,787	38,650	61,075	26,665	34,410	6,098	2,890	3,208	1,898	929	969	1,642	854	788
2006	69,333	31,266	38,067	60,907	26,889	34,018	6,180	3,132	3,048	1,751	906	845	1,557	859	698
2005	69,132	31,236	37,896	60,655	26,799	33,856	6,356	3,231	3,125	1,679	871	808	1,477	837	640
2004	68,243	31,773	36,470	59,851	27,305	32,546	6,451	3,328	3,123	1,636	845	791	1,321	779	542
2003	67,858	32,212	35,646	59,458	27,731	31,727	6,543	3,393	3,150	1,470	733	737	1,224	712	512
10 to <15															
2008	38,971	17,928	21,043	34,230	15,432	18,798	3,553	1,816	1,737	1,233	584	649	864	492	372
2007	38,895	17,826	21,069	34,181	15,348	18,833	3,559	1,817	1,742	1,016	508	508	760	428	332
2006	38,216	17,584	20,632	33,688	15,254	18,434	3,492	1,745	1,747	965	457	508	660	379	281
2005	37,536	17,208	20,328	33,309	15,029	18,280	3,320	1,679	1,641	940	429	511	620	357	263
2004	36,705	17,638	19,067	32,779	15,553	17,226	3,102	1,621	1,481	NA	NA	NA	NA	NA	NA
2003	35,894	17,329	18,565	32,082	15,357	16,725	2,972	1,510	1,472	NA	NA	NA	NA	NA	NA
15 to <20															
2008	20,535	9,571	10,964	18,320	8,397	9,923	1,696	920	776	NA	NA	NA	NA	NA	NA
2007	20,533	9,540	10,993	18,319	8,367	9,952	1,711	927	784	NA	NA	NA	NA	NA	NA
2006	20,390	9,575	10,815	18,225	8,362	9,863	1,697	974	723	NA	NA	NA	NA	NA	NA
2005	19,609	9,534	10,075	17,471	8,320	9,151	1,677	944	733	NA	NA	NA	NA	NA	NA
2004	19,051	9,160	9,891	16,905	7,948	8,957	1,692	923	769	NA	NA	NA	NA	NA	NA
2003	19,317	9,309	10,008	17,097	8,040	9,057	1,806	996	810	NA	NA	NA	NA	NA	NA
20 to <25															
2008	10,970	4,964	6,006	9,683	4,353	5,330	1,003	454	549	NA	NA	NA	NA	NA	NA
2007	10,999	4,966	6,033	9,701	4,347	5,354	1,022	466	556	NA	NA	NA	NA	NA	NA
2006	10,614	4,868	5,746	9,281	4,190	5,091	1,076	524	552	NA	NA	NA	NA	NA	NA
2005	10,036	4,735	5,301	8,821	4,135	4,686	950	473	477	NA	NA	NA	NA	NA	NA
2004	9,818	4,783	5,035	8,674	4,198	4,476	903	466	437	NA	NA	NA	NA	NA	NA
2003	9,930	5,053	4,877	8,800	4,455	4,345	878	478	400	NA	NA	NA	NA	NA	NA
≥25															
2008	5,721	2,741	2,980	5,167	2,442	2,725	421	218	203	NA	NA	NA	NA	NA	NA
2007	5,743	2,750	2,993	5,177	2,440	2,737	436	230	206	NA	NA	NA	NA	NA	NA
2006	16,562	8,920	7,642	10,245	4,908	5,337	954	525	429	NA	NA	NA	NA	NA	NA
2005	17,756	9,751	8,005	11,025	5,421	5,604	1,058	611	447	NA	NA	NA	NA	NA	NA
2004 <sup>6</sup>	12,892	7,467	5,425	6,351	3,172	3,179	610	344	266	NA	NA	NA	NA	NA	NA
2003 <sup>7</sup>	14,055	8,092	5,963	7,069	3,533	3,536	710	388	322	NA	NA	NA	NA	NA	NA

Source: National Cancer Institute. SEER Cancer Statistics Review, 1975-2008

Notes:

- (1) Prevalence proportions were calculated using only the First Malignant Tumor Ever for a person.
  - (2) Total prevalence counts are based on 2008 cancer prevalence proportions from the SEER registries and 1/1/2008 U.S. population estimates based on the average of 2007 and 2008 population estimates from the U.S. Bureau of the Census, respectively.
  - (3) Statistics based on SEER 9 areas.
  - (4) Statistics based on NHIA for Hispanic for SEER 11 areas and Rural Georgia.
  - (5) Statistics based on SEER 11 areas and Rural Georgia.
  - (6) Statistics based on >=29 years of age.
  - (7) Statistics based on >=28 years of age.
- NA - Not Available.

**Table 8: Age-Adjusted Incidence Rates<sup>1</sup> by Site, Race and Sex, 1973-2008**

Year/Site	All Races			Whites			Blacks		
	Total	Males	Females	Total	Males	Females	Total	Males	Females
<b>Lung &amp; Bronchus</b>									
1973	49.0	85.9	20.9	47.9	84.9	20.4	68.0	123.7	23.6
1974	50.6	87.3	22.8	50.0	87.0	22.5	66.5	113.9	26.2
1975	52.2	89.4	24.5	51.9	89.1	24.9	64.7	114.9	24.7
1976	55.4	93.8	27.3	54.6	92.7	27.3	72.3	131.0	28.6
1977	56.7	95.5	28.3	55.9	94.7	28.1	73.5	124.7	33.9
1978	57.9	96.7	29.7	57.3	95.9	29.9	74.6	130.7	31.6
1979	58.6	95.7	31.6	58.0	95.1	31.6	74.3	127.4	34.0
1980	60.6	99.9	32.2	59.4	97.6	32.4	86.6	151.5	38.3
1981	62.0	99.4	35.1	61.5	98.5	35.5	82.2	143.0	37.2
1982	63.3	100.7	36.8	63.1	99.7	37.7	80.4	141.1	35.7
1983	63.4	99.4	37.8	63.0	97.6	39.0	86.7	151.3	39.5
1984	65.5	102.1	39.5	64.4	100.0	39.7	93.0	159.2	44.8
1985	64.7	98.8	40.2	64.0	97.0	40.8	89.7	149.6	46.1
1986	65.8	99.1	42.3	65.2	97.5	42.9	92.9	156.1	48.7
1987	68.0	101.6	44.2	68.1	100.7	45.5	84.8	143.7	43.2
1988	68.1	98.9	46.3	68.3	98.0	47.8	88.2	145.1	48.0
1989	67.7	98.2	46.2	67.8	97.3	47.4	89.1	142.6	51.4
1990	68.2	97.3	47.8	68.4	96.5	48.9	86.9	137.1	52.1
1991	69.4	97.6	49.6	69.1	96.3	50.6	93.3	145.0	56.9
1992	69.6	97.4	49.9	69.0	95.2	51.0	94.1	149.3	55.7
1993	67.8	94.1	49.2	67.9	92.7	50.8	86.3	135.3	52.2
1994	67.3	91.1	50.6	67.0	90.3	51.7	87.2	131.3	56.2
1995	66.9	87.9	50.4	67.1	88.0	52.3	86.2	138.7	50.2
1996	66.4	87.9	51.2	66.7	86.6	52.9	84.0	127.3	54.8
1997	66.6	86.3	52.5	67.2	84.9	54.9	82.0	129.3	50.4
1998	67.4	87.9	52.8	68.0	86.6	54.9	86.8	130.2	57.5
1999	65.6	84.4	52.3	66.1	83.0	54.2	83.8	121.4	58.3
2000	63.7	81.4	51.0	64.3	80.2	53.0	79.3	113.3	56.4
2001	62.7	79.5	50.4	63.7	79.3	52.4	78.5	112.2	55.8
2002	62.1	77.8	50.8	62.7	77.1	52.4	80.1	110.4	59.9
2003	62.7	78.5	51.3	63.6	77.1	53.9	78.5	115.5	53.5
2004	60.0	73.6	50.2	60.6	72.7	52.0	73.0	100.0	54.9
2005	61.0	73.2	52.2	61.9	73.0	54.0	72.2	94.2	57.6
2006	60.0	71.3	51.6	60.5	70.1	53.5	73.0	95.7	57.2
2007	59.3	69.9	51.6	60.4	69.1	54.1	69.5	93.5	53.4
2008	58.8	70.2	50.5	59.3	68.7	52.7	73.4	101.2	54.8
<b>Mesothelioma</b>									
1977	0.6	1.0	0.3	0.6	1.1	0.3	0.2	0.3	0.1
1978	0.7	1.4	0.2	0.8	1.5	0.2	0.3	0.3	0.3
1979	0.8	1.5	0.3	0.8	1.6	0.3	0.6	0.9	0.4
1980	1.0	1.8	0.4	1.0	2.0	0.4	0.2	0.7	0.0
1981	0.8	1.4	0.3	0.8	1.5	0.3	0.3	0.8	0.0
1982	0.8	1.4	0.4	0.9	1.5	0.4	0.3	0.9	0.0
1983	1.0	1.9	0.5	1.1	2.0	0.5	0.9	1.6	0.5
1984	1.1	2.0	0.4	1.2	2.2	0.4	0.3	0.8	0.0
1985	0.9	1.7	0.4	1.0	1.7	0.4	0.8	1.8	0.2
1986	0.9	1.7	0.4	1.0	1.8	0.5	0.5	0.9	0.2
1987	1.0	1.7	0.4	1.0	1.8	0.5	0.7	1.1	0.4
1988	1.0	1.8	0.4	1.1	2.0	0.4	0.6	1.2	0.3
1989	1.1	2.2	0.4	1.2	2.3	0.4	0.7	1.0	0.4
1990	1.1	2.2	0.5	1.3	2.3	0.5	0.7	1.4	0.3
1991	1.1	2.1	0.4	1.2	2.2	0.5	0.7	1.6	0.2
1992	1.2	2.5	0.4	1.3	2.7	0.4	0.7	1.3	0.2
1993	1.1	2.0	0.4	1.1	2.2	0.4	0.7	1.2	0.3
1994	1.2	2.2	0.4	1.2	2.3	0.5	1.1	1.8	0.5
1995	1.2	2.2	0.5	1.2	2.3	0.5	0.8	1.7	0.3
1996	1.1	2.1	0.5	1.3	2.4	0.5	0.4	0.8	0.2
1997	1.0	1.9	0.4	1.1	2.0	0.4	0.9	1.4	0.6
1998	1.1	2.1	0.4	1.2	2.2	0.5	0.6	1.3	0.2
1999	1.1	2.2	0.4	1.2	2.3	0.4	0.7	1.3	0.2
2000	1.1	2.1	0.3	1.2	2.4	0.4	0.6	1.1	0.2
2001	1.0	1.9	0.4	1.1	2.1	0.5	0.4	0.9	0.2
2002	1.0	1.9	0.4	1.1	2.1	0.4	--	--	--
2003	0.9	1.6	0.4	1.0	1.8	0.4	--	--	--
2004	1.1	2.0	0.4	1.2	2.2	0.5	--	--	--
2005	1.0	1.9	0.4	1.2	2.1	0.5	--	--	--
2006	0.9	1.6	0.4	1.0	1.7	0.5	--	--	--
2007	1.0	1.7	0.4	1.1	1.9	0.5	--	--	--
2008	0.9	1.7	0.3	1.0	1.9	0.4	--	--	--

(Continued on next page)

**Table 8 continued: Age-Adjusted Incidence Rates<sup>1</sup> by Site, Race and Sex, 1973-2008**

Year/Site	All Races			Whites			Blacks		
	Total	Males	Females	Total	Males	Females	Total	Males	Females
<b>Oral Cavity &amp; Pharynx</b>									
1973	13.1	20.8	7.2	13.0	20.9	7.1	12.5	19.2	6.8
1974	12.9	20.4	7.1	12.9	20.7	7.0	12.5	18.9	7.1
1975	13.2	21.2	7.1	13.3	21.7	6.9	13.4	20.2	8.2
1976	13.3	21.0	7.4	13.2	21.0	7.4	15.1	23.8	8.3
1977	12.7	20.1	7.0	12.6	19.8	7.0	14.5	23.9	6.8
1978	13.4	20.9	7.7	13.2	20.8	7.6	15.8	25.8	8.1
1979	14.0	21.9	8.0	13.7	21.6	7.7	18.4	28.2	10.6
1980	13.3	20.3	7.9	13.0	20.0	7.6	16.8	25.4	9.6
1981	13.6	20.8	7.9	13.4	20.5	7.9	16.7	28.2	7.5
1982	13.3	20.3	7.9	13.1	19.9	7.8	17.1	27.4	8.9
1983	13.3	21.2	7.2	13.3	21.2	7.3	16.1	26.0	8.3
1984	13.5	20.8	7.9	13.0	20.1	7.6	18.9	30.0	10.1
1985	13.3	19.8	8.2	13.2	19.6	8.3	16.0	25.7	8.5
1986	12.5	19.1	7.2	12.3	18.8	7.3	16.1	28.0	7.0
1987	13.2	20.5	7.5	13.1	20.1	7.7	16.8	30.0	6.9
1988	12.1	18.1	7.3	11.7	17.6	7.1	16.4	25.6	9.1
1989	12.1	18.2	7.3	11.8	17.6	7.3	15.7	27.0	7.0
1990	12.6	19.4	7.3	12.4	18.8	7.4	16.1	28.0	6.9
1991	12.2	18.3	7.2	12.1	18.1	7.3	14.5	23.7	7.4
1992	12.0	18.3	6.9	11.8	18.0	6.9	14.8	25.1	6.9
1993	12.4	18.7	7.3	12.2	18.4	7.2	15.5	25.0	8.0
1994	11.7	17.7	6.8	11.4	16.8	6.9	15.8	26.8	7.1
1995	11.5	16.9	7.2	11.5	16.7	7.3	13.5	22.5	6.7
1996	11.7	17.7	7.0	11.4	17.1	6.9	14.8	24.2	7.5
1997	11.5	17.3	6.8	11.5	17.1	6.9	11.5	18.4	6.2
1998	11.2	16.6	6.7	11.2	16.3	6.9	12.9	22.3	6.2
1999	10.5	15.5	6.4	10.4	15.3	6.3	11.5	19.5	5.6
2000	10.7	16.0	6.3	10.7	15.6	6.4	11.6	20.5	4.9
2001	10.6	15.2	6.8	10.7	15.2	6.8	11.9	18.7	6.9
2002	10.8	15.9	6.5	11.0	16.0	6.6	10.9	16.7	6.4
2003	10.2	15.2	6.0	10.2	15.2	5.8	11.5	16.2	7.7
2004	10.4	15.5	6.0	10.6	15.7	6.0	9.9	15.7	5.6
2005	10.4	15.1	6.3	10.4	15.4	6.1	10.6	16.1	6.7
2006	10.3	15.0	6.2	10.4	15.0	6.4	9.6	15.9	5.0
2007	10.3	15.3	6.2	10.6	15.6	6.1	9.4	14.8	5.3
2008	10.8	16.0	6.3	11.1	16.4	6.4	8.8	13.7	5.0
<b>Larynx</b>									
1973	5.1	9.7	1.5	5.0	9.7	1.4	7.5	14.2	--
1974	5.0	9.3	1.6	5.0	9.4	1.5	6.5	11.0	--
1975	5.0	9.5	1.5	5.0	9.4	1.5	7.0	13.2	--
1976	5.2	10.0	1.4	5.2	9.9	1.4	7.3	14.6	--
1977	5.0	9.7	1.4	5.0	9.7	1.3	7.5	13.9	--
1978	5.3	9.8	1.8	5.3	9.8	1.9	6.9	13.2	--
1979	5.4	10.1	1.7	5.4	10.2	1.7	7.5	13.2	--
1980	5.2	10.0	1.6	5.2	9.9	1.5	7.3	14.3	--
1981	5.4	9.8	1.9	5.3	9.6	2.0	8.1	16.3	--
1982	5.3	9.7	1.8	5.3	9.8	1.8	7.9	14.4	--
1983	5.3	9.9	1.7	5.4	10.1	1.7	6.8	12.2	--
1984	5.1	9.6	1.6	5.0	9.6	1.5	8.5	14.9	3.4
1985	5.4	9.9	1.9	5.4	10.0	1.9	8.4	15.5	3.2
1986	5.0	9.4	1.6	4.9	9.2	1.7	7.8	15.5	--
1987	5.2	9.4	1.9	5.1	9.4	1.9	8.2	15.0	3.1
1988	5.2	9.6	1.9	5.2	9.6	1.8	8.2	14.8	3.3
1989	5.0	8.9	2.0	5.0	8.9	1.9	7.9	14.3	3.3
1990	5.1	9.2	1.9	5.0	9.0	1.9	9.5	17.8	3.6
1991	4.7	8.5	1.8	4.8	8.5	1.9	6.7	12.6	--
1992	5.0	9.1	1.8	4.9	8.9	1.7	8.7	15.8	3.4
1993	4.4	8.1	1.5	4.4	8.0	1.5	6.9	14.1	--
1994	4.7	8.3	1.8	4.5	8.1	1.7	8.9	15.8	3.8
1995	4.4	7.9	1.6	4.4	7.8	1.6	6.7	13.0	--
1996	4.3	7.5	1.7	4.3	7.5	1.6	6.4	11.4	2.8
1997	4.2	7.5	1.6	4.1	7.3	1.6	7.1	13.2	2.7
1998	3.8	6.7	1.6	3.7	6.5	1.6	6.5	11.8	2.8
1999	4.1	7.0	1.8	4.1	6.9	1.8	7.2	12.3	3.6
2000	4.0	7.2	1.4	4.0	7.1	1.5	6.1	11.3	2.3
2001	3.6	6.5	1.3	3.6	6.3	1.3	6.1	12.0	1.8
2002	3.5	6.2	1.3	3.4	6.0	1.3	6.2	11.1	2.6
2003	3.3	5.9	1.2	3.3	5.7	1.3	4.9	9.2	1.8
2004	3.4	6.0	1.3	3.4	5.9	1.3	5.8	10.9	2.3
2005	3.4	6.1	1.3	3.4	6.1	1.3	5.5	10.4	1.9
2006	3.2	5.7	1.2	3.3	5.7	1.3	5.2	10.2	1.5
2007	3.1	5.5	1.2	3.1	5.4	1.2	5.4	9.9	2.3
2008	3.1	5.4	1.1	3.1	5.5	1.1	4.5	8.3	1.9

Source: National Cancer Institute. SEER Cancer Statistics Review, 1975-2008.

Notes:

(1) Rates are per 100,000 persons and are age-adjusted to the 2000 U.S. standard population.

-- Rates based on less than 25 cases for the time interval.

**Table 9: Age-Adjusted Incidence Rates<sup>1</sup> by Race/Ethnicity and Sex, 2004-2008**

<b>Sex</b>	<b>Total</b>	<b>White</b>	<b>Black</b>	<b>Hispanic<sup>2</sup></b>	<b>Asian/Pacific Islander</b>	<b>American Indian/ Alaska Native</b>
Males	75.2	75.3	99.8	39.6	53.2	51.2
Females	52.3	54.6	54.7	24.5	28.5	39.5
Total	62.0	63.3	72.7	30.8	39.0	44.5

Source: National Cancer Institute. SEER Cancer Statistics Review, 1975-2008.

Notes:

(1) Rates are per 100,000 age-adjusted to the 2000 U.S. standard population. Incidence rates obtained from 17 SEER areas.

(2) Hispanics are not mutually exclusive from whites, blacks, Asian/Pacific Islanders and American Indians/Alaska Natives.

**Table 10: Incidence Counts and Age-Adjusted Rates by State and Sex, 2008**

State	Male		Female	
	Incidence Counts	Age-Adjusted Incidence Rate <sup>1</sup>	Incidence Counts	Age-Adjusted Incidence Rate <sup>1</sup>
Alabama	2,469	108.2	1,614	55.0
Alaska	181	79.4	160	63.7
Arizona	1,839	59.7	1,635	44.8
Arkansas	1,539	105.3	1,072	60.1
California	8,677	58.5	8,023	42.5
Colorado	1,150	57.9	1,093	44.8
Connecticut	1,338	79.2	1,296	58.1
Delaware	380	85.7	369	67.2
District of Columbia	185	74.1	156	45.9
Florida	8,704	80.3	7,378	56.8
Georgia	3,404	92.0	2,708	55.7
Hawaii	485	71.8	312	38.0
Idaho	440	63.5	383	47.6
Illinois	4,795	85.6	4,401	60.2
Indiana	2,818	96.0	2,266	61.1
Iowa	1,270	82.8	1,704	56.3
Kansas	1,062	81.7	841	51.5
Kentucky	2,575	125.1	2,084	80.3
Louisiana	--	100.5	--	56.6
Maine	663	89.7	583	64.8
Maryland	1,874	76.0	1,796	55.3
Massachusetts	2,412	77.7	2,588	64.9
Michigan	3,991*	82.8	3,487*	58.1
Minnesota	1,545*	63.1	1,475*	50.7
Mississippi	1,557	119.5	1,004	58.6
Missouri	2,666	91.8	2,282	63.1
Montana	352	67.4	323	53.5
Nebraska	601	70.9	563	53.8
Nevada	893	76.4	823	62.5
New Hampshire	506	77.0	481	59.8
New Jersey	2,914	71.9	3,028	56.6
New Mexico	464	48.9	450	39.5
New York	6,796	75.2	6,671	55.4
North Carolina	4,064	96.2	3,094	57.0
North Dakota	221	67.0	172	43.4
Ohio	4,927	87.5	4,178	57.9
Oklahoma	1,725	97.6	1,450	66.4
Oregon	1,322	69.8	1,316	57.6
Pennsylvania	5,595	84.6	4,985	57.8
Rhode Island	436	84.9	462	66.8
South Carolina	1,960	89.2	1,383	49.7
South Dakota	300	71.5	224	45.5
Tennessee	3,023	100.4	2,321	61.1
Texas	7,040	75.4	5,515	47.3
Utah	276	29.2	212	19.0
Vermont	249	76.4	225	55.6
Virginia	2,890	85.0	2,345	53.3
Washington	2,023	68.5	2,010	56.2
West Virginia	1,089	106.1	932	74.6
Wisconsin	2,039*	74.3	1,780*	52.7
Wyoming	157	60.8	138	47.6
United States	--	79.5	--	54.5

Source: National Cancer Institute. State Cancer Profiles web system. [statecancerprofiles.cancer.gov](http://statecancerprofiles.cancer.gov), accessed September 21, 2011.

Notes:

(1) Rates are per 100,000 population. Age-adjusted incidence rates are adjusted to the 2000 U.S. standard population.

-- Louisiana count suppressed due to data consistency issues.

\* Data do not include cases diagnosed in other states.

**Table 11: Number of First-Listed Hospital Discharges<sup>1</sup> and Rate per 10,000 Population by Age, 1979-2010**

Year	<15		15-44		45-64		65+		Total <sup>2</sup>	
	Number	Rate	Number	Rate	Number	Rate	Number	Rate	Number	Rate
1979	---	---	12,000	1.2	130,000	29.3	131,000	52.1	274,000	12.7
1980	---	---	12,000	1.2	123,000	27.8	142,000	55.3	277,000	12.4
1981	---	---	11,000		134,000	30.2	145,000	55.2	293,000	12.9
1982	---	---	15,000	1.4	147,000	33.2	155,000	58.0	319,000	13.9
1983	---	---	12,000	1.1	151,000	34.0	176,000	64.1	339,000	14.6
1984	---	---	13,000	1.2	155,000	34.1	172,000	61.2	340,000	14.5
1985	---	---	13,000	1.2	132,000	29.4	169,000	59.4	315,000	13.3
1986	---	---	15,000	1.3	120,000	26.7	155,000	53.3	290,000	12.1
1987	---	---	12,000	1.1	129,000	28.5	164,000	54.9	305,000	12.6
1988 <sup>3</sup>	---	---	8,000*	0.7*	102,000	22.2	125,000	41.2	236,000	9.7
1989	---	---	11,000	1.0	101,000	21.8	127,000	40.9	239,000	9.7
1990	---	---	12,000	1.0	101,000	21.4	119,000	37.7	231,000	9.3
1991	---	---	10,000	0.8	101,000	21.6	125,000	39.3	236,000	9.4
1992	---	---	7,000*	0.6*	86,000	17.8	122,000	37.8	215,000	8.5
1993	---	---	7,000*	0.6*	75,000	15.1	111,000	33.9	194,000	7.6
1994	---	---	9,000*	0.7*	73,000	14.3	126,000	37.9	199,000	7.6
1995	---	---	8,000*	0.7*	75,000	14.4	110,000	32.8	197,000	7.5
1996	---	---	10,000	0.8	72,000	13.4	122,000	36.0	210,000	8.0
1997	---	---	---	---	60,000	10.9	123,000	36.4	192,000	7.1
1998	---	---	9,000*	0.7*	55,000	9.6	99,000	29.0	165,000	6.0
1999	---	---	5,000*	0.4*	54,000	9.2	104,000	30.5	164,000	6.0
2000	---	---	8,000*	0.6*	43,000	7.0	87,000	25.1	139,000	5.0
2001	---	---	6,000*	0.5*	56,000	8.7	90,000	25.6	153,000	5.4
2002	---	---	5,000*	0.6*	55,000	8.3	100,000	28.0	160,000	5.6
2003	---	---	7,000*	0.5*	57,000	8.3	104,000	29.0	168,000	5.8
2004	---	---	12,000	1.0	54,000	7.6	97,000	26.8	164,000	5.6
2005	---	---	7,000*	0.6*	54,000	7.4	93,000	25.2	154,000	5.2
2006	---	---	5,000*	0.4*	51,000	6.8	109,000	29.3	166,000	5.6
2007	---	---	---	---	64,000	8.4	107,000	28.2	179,000	6.0
2008	---	---	10,000*	0.8*	62,000	8.0	104,000	26.6	176,000	5.8
2009	---	---	---	---	69,000	8.7	117,000	29.6	194,000	6.4
2010	---	---	---	---	57,000	7.1	116,000	17.5	177,000	5.8

Source: National Center for Health Statistics. National Hospital Discharge Survey, 1979-2010.

Notes:

(1) Hospital discharge estimates are coded by ICD-9 revisions (ICD-9 Code 162, 176.4, 197.0, 197.3).

(2) Due to rounding and the exclusion of numbers that do not meet standards of reliability, numbers across may not sum to the total number of hospital discharges.

(3) Data from 1988-2010 may not be comparable to earlier years due to the redesign of the survey in 1988.

--- Figure does not meet standards of reliability or precision.

\* Estimates of 5,000-10,000 and corresponding rates should be used with caution.

**Table 12: Number of First-Listed Hospital Discharges<sup>1</sup> and Rate per 10,000 Population by Race, 1988-2010**

Year	Number of Discharges				Rate per 10,000 population			
	Total	White	Black	All Other	Total	White	Black	All Other
1988	236,000	193,000	N/A	N/A	9.7	9.3	N/A	N/A
1989	239,000	194,000	N/A	N/A	9.7	9.3	N/A	N/A
1990	231,000	183,000	19,000	---	9.3	8.7	6.3	---
1991	236,000	181,000	21,000	7,000*	9.4	8.6	6.9	7.1*
1992	215,000	161,000	16,000	5,000*	8.5	7.6	5.2	4.7*
1993	194,000	149,000	16,000	---	7.6	7.0	5.1	---
1994	199,000	151,000	21,000	7,000*	7.6	7.0	6.4	6.0*
1995	197,000	140,000	21,000	---	7.5	6.5	6.4	---
1996	210,000	156,000	17,000	5,000*	8.0	7.1	5.3	4.4*
1997	192,000	142,000	20,000	---	7.1	6.4	5.6	---
1998	165,000	114,000	14,000	7,000*	6.0	5.1	3.8	5.1*
1999	164,000	115,000	13,000	8,000*	6.0	5.1	3.5	6.3*
2000	139,000	85,000	12,000	---	5.0	3.7	3.5	---
2001	153,000	95,000	14,000	---	5.4	4.1	4.0	---
2002	160,000	102,000	12,000	---	5.6	4.4	3.3	---
2003	168,000	113,000	16,000	---	5.8	4.9	4.3	---
2004	164,000	102,000	17,000	6,000*	5.6	4.3	4.5	3.2*
2005	154,000	98,000	15,000	6,000*	5.2	4.1	4.0	2.8*
2006	166,000	104,000	15,000	---	5.6	4.3	4.1	---
2007	179,000	118,000	22,000	---	6.0	4.9	5.8	---
2008	176,000	101,000	21,000	10,385	5.8	4.2	5.5	4.7*
2009	194,000	136,000	25,000	9,843*	6.4	5.6	6.4	4.3*
2010	177,000	135,000	21,000	8,469*	5.8	5.5	5.2	3.6*

Source: National Center for Health Statistics. National Hospital Discharge Survey, 1979-2010.

Notes:

(1) Hospital discharge estimates are coded by ICD-9 revisions (ICD-9 Code 162, 176.4, 197.0, 197.3).

--- Figure does not meet standards of reliability or precision.

\* Estimates below 10,000 and corresponding rates should be used with caution.

N/A - Not Available.

**Table 13: Relative Five-Year Survival Rates by Race and Site, Cases Diagnosed in 1960-63, 1970-2007**

	Lung & Bronchus	Colon	Rectum	Female Breast	Esophagus	Prostate
<b>Total</b>						
1960-63 <sup>1</sup>	--	--	--	--	--	--
1970-73 <sup>1</sup>	--	--	--	--	--	--
1975-77	12.7	51.5	49.2	75.1	5.1	68.9
1978-80	13.3	53.5	50.4	74.9	5.1	72.0
1981-83	13.7	56.5	53.0	76.7	6.8	73.8
1984-86	13.3	59.1	57.3	79.3	9.6	76.1
1987-89	13.5	61.3	59.1	84.3	9.8	83.9
1990-92	14.1	63.2	60.5	85.5	12.7	94.2
1993-95	14.9	60.8	61.2	86.6	12.7	95.4
1996-2000	15.0	63.3	64.4	89.1	15.4	98.3
2001-07	16.3*	65.2*	68.0*	90.0*	18.5*	99.9*
<b>White</b>						
1960-63 <sup>1</sup>	8	43	38	63	4	50
1970-73 <sup>1</sup>	10	49	45	68	4	63
1975-77	12.8	51.7	49.4	75.9	5.6	69.8
1978-80	13.4	53.7	51.3	75.6	5.5	73.3
1981-83	13.9	56.7	53.7	77.7	7.6	74.9
1984-86	13.5	59.7	58.0	80.4	10.6	77.3
1987-89	13.8	61.8	59.6	85.4	11.1	85.4
1990-92	14.5	64.0	61.2	86.7	13.6	95.3
1993-95	15.1	61.4	61.7	88.0	14.3	96.2
1996-2000	15.2	64.4	65.0	90.2	16.3	98.9
2001-07	16.7*	66.5*	68.7*	91.4*	19.6*	99.9*
<b>Black</b>						
1960-63 <sup>1</sup>	5	34	27	46	1	35
1970-73 <sup>1</sup>	7	37	30	51	4	55
1975-77	11.5	46.4	45.0	62.2	3.1	61.3
1978-80	12.1	49.6	35.6	63.9	4.3	62.7
1981-83	11.7	49.7	40.6	64.0	4.3	63.7
1984-86	11.4	49.9	46.4	65.3	8.2	66.4
1987-89	11.2	53.3	53.7	71.3	6.4	72.2
1990-92	10.8	54.3	52.2	71.8	9.4	85.5
1993-95	13.1	52.4	54.8	72.9	7.5	91.5
1996-2000	12.6	53.5	54.8	77.5	11.1	95.6
2001-07	13.3*	54.8*	60.9*	77.4*	12.8*	97.9*

Source: National Cancer Institute. SEER Cancer Statistics Review, 1975-2008.

Notes:

(1) Rates are based on data from a series of hospital registries and one population based registry. Later rates are from the SEER 9 areas (San Francisco, Connecticut, Detroit, Hawaii, Iowa, New Mexico, Seattle, Utah and Atlanta).

-- Statistic could not be calculated.

\* The difference in rates between 1975-1977 and 2001-2007 is statistically significant (p<.05).

**Table 14: Five-Year Survival Rates<sup>1</sup> (%) by Type, Race and Sex, 1975-2007**

Type/Year of Diagnosis	All Races			Whites			Blacks		
	Total	Males	Females	Total	Males	Females	Total	Males	Females
<b>Lung &amp; Bronchus</b>									
1975-1977	12.7	11.5	15.8	12.8	11.5	15.9	11.4	10.6	14.0
1978-1980	13.3	11.8	16.7	13.4	12.0	16.6	12.0	10.0	17.9
1981-1983	13.7	12.1	16.9	13.9	12.3	17.1	11.7	10.5	15.1
1984-1986	13.3	11.6	16.4	13.5	11.7	16.7	11.4	10.6	13.0
1987-1989	13.5	12.4	15.4	13.8	12.5	15.8	11.2	11.1	11.4
1990-1992	14.1	12.6	16.3	14.5	13.0	16.6	10.8	9.6	12.8
1993-1995	14.8	12.9	17.4	15.1	13.1	17.7	13.0	11.5	15.8
1996-2000	15.0	13.1	17.4	15.2	13.2	17.5	12.6	11.1	14.8
2001-2007	16.3*	14.2*	18.8*	16.7*	14.5*	19.2*	13.3*	12.1*	15.0*
<b>Small Cell Lung &amp; Bronchus</b>									
1975-1977	3.7	3.2	4.8	3.8	3.2	4.9	3.8	3.9	3.6
1978-1980	4.4	3.3	6.6	4.5	3.5	6.6	3.2	2.4	5.0
1981-1983	4.8	3.8	6.4	4.8	3.9	6.2	5.6	4.3	8.5
1984-1986	4.7	3.5	6.5	4.9	3.7	6.7	3.6	2.3	5.6
1987-1989	5.2	4.0	6.7	5.3	4.0	6.9	4.0	3.4	4.7
1990-1992	5.6	4.8	6.6	5.7	4.8	6.8	4.2	4.4	3.9
1993-1995	6.6	5.4	8.0	6.5	5.3	7.8	6.9	4.6	9.9
1996-2000 <sup>2</sup>	5.9	5.1	6.8	5.9	4.9	7.0	4.7	4.6	4.9
2001-2007	6.2*	4.5*	7.9*	6.2*	4.3*	8.2*	5.0*	4.7*	5.2
<b>Non-Small Cell Lung &amp; Bronchus</b>									
1975-1977	14.2	12.7	17.9	14.3	12.8	18.1	12.4	11.3	16.2
1978-1980	15.0	13.4	18.8	15.2	13.6	18.9	13.2	10.9	19.9
1981-1983	15.6	13.7	19.5	16.0	14.0	19.9	12.5	11.3	16.1
1984-1986	15.1	13.2	18.8	15.5	13.4	19.3	12.6	11.8	14.6
1987-1989	15.3	14.0	17.6	15.7	14.2	18.1	12.3	12.1	12.6
1990-1992	15.8	14.0	18.6	16.4	14.6	19.1	11.6	10.2	14.3
1993-1995	16.4	14.2	19.5	16.8	14.5	20.0	13.8	12.3	16.7
1996-2000 <sup>2</sup>	16.6	14.4	19.4	16.9	14.7	19.7	13.6	11.8	16.3
2001-2007	18.0*	15.7*	20.7*	18.6*	16.2*	21.3*	14.3*	12.8	16.2

Source: National Cancer Institute. SEER Cancer Statistics Review, 1975-2008.

Notes:

(1) Rates are from the SEER 9 areas (San Francisco, Connecticut, Detroit, Hawaii, Iowa, New Mexico, Seattle, Utah, Atlanta). Rates are based on follow-up of patients into 2008.

(2) Rates are from the SEER 17 areas (Excluding SF/SJM/LA, Kentucky, Louisiana and New Jersey). Rates are based on follow-up of patients into 2008.

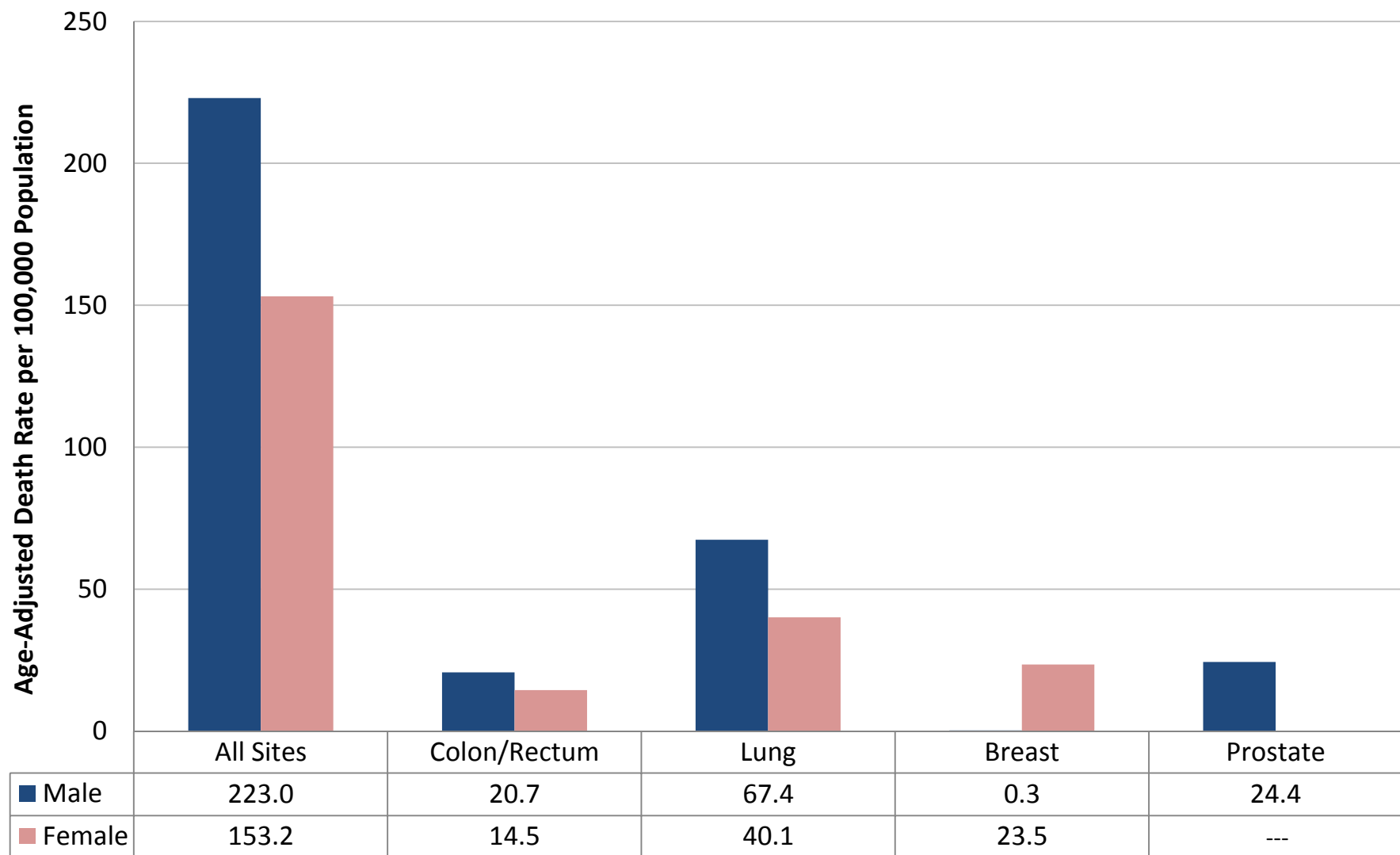
\* The difference in rates between 1975-1977 and 2001-2007 is statistically significant ( $p < .05$ ).

**Table 15: Lifetime Risk (%) of Being Diagnosed With or Dying From, by Race and Sex, 2006-2008**

Type of Risk	All Races		Whites		Blacks	
	Males	Females	Males	Females	Males	Females
<b>Lifetime Risk of Diagnosis</b>	7.66	6.33	7.71	6.64	7.80	5.56
<b>Lifetime Risk of Dying</b>	6.85	5.04	6.93	5.23	6.76	4.25

Source: National Cancer Institute. SEER Cancer Statistics Review, 1975-2008.

**Figure 1: Age-Adjusted Mortality Rates<sup>1</sup> by Sex and Site, 2004-2008**



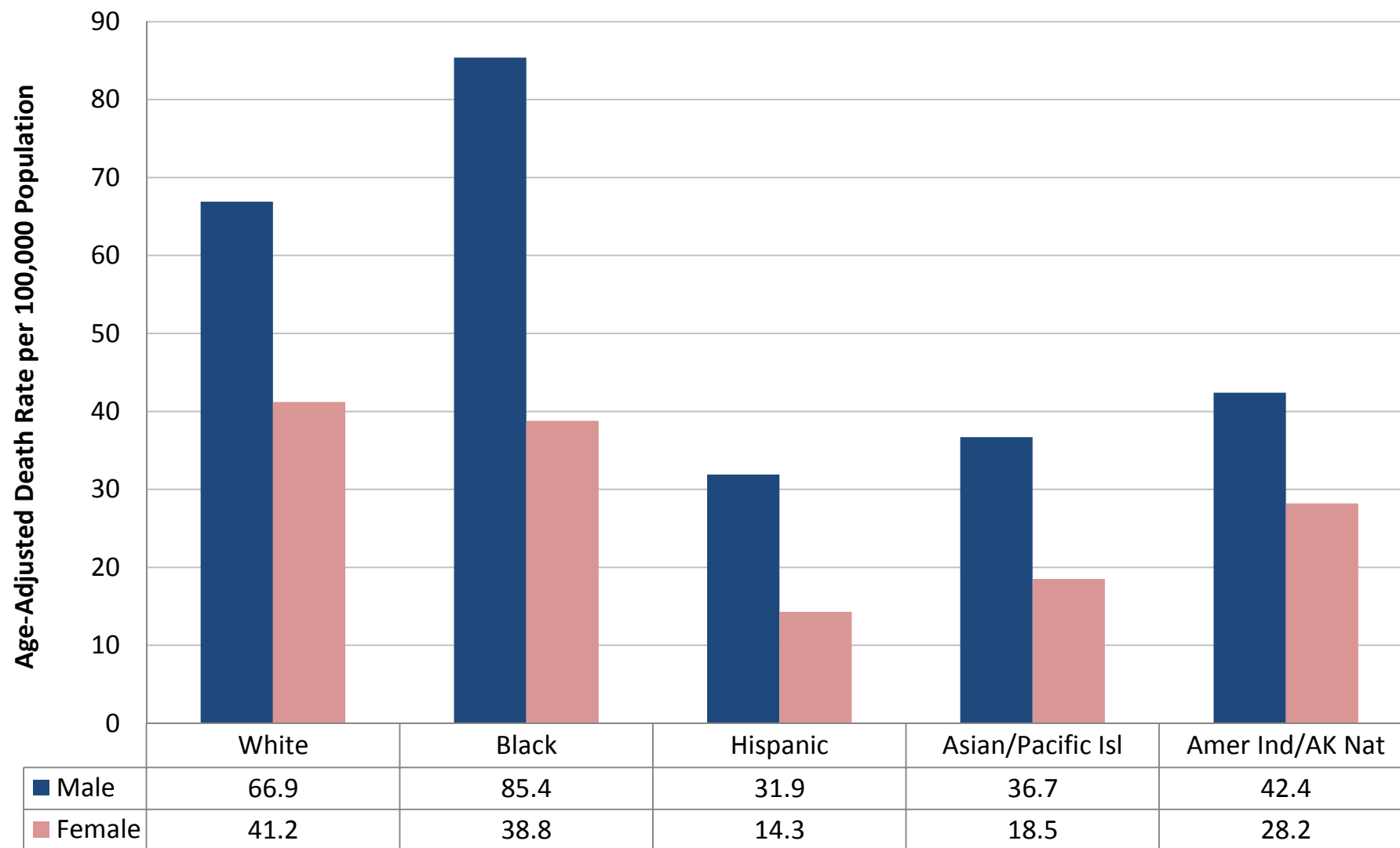
Source: National Cancer Institute. SEER Cancer Statistics Review, 1975-2008.

Notes:

(1) Rates are per 100,000 persons, age-adjusted to the 2000 U.S. standard population and coded by ICD-10.

--- Number of deaths is too small to calculate a rate.

**Figure 2: Age-Adjusted Mortality Rates<sup>1</sup> by Race/Ethnicity<sup>2</sup> and Sex, 2004-2008**



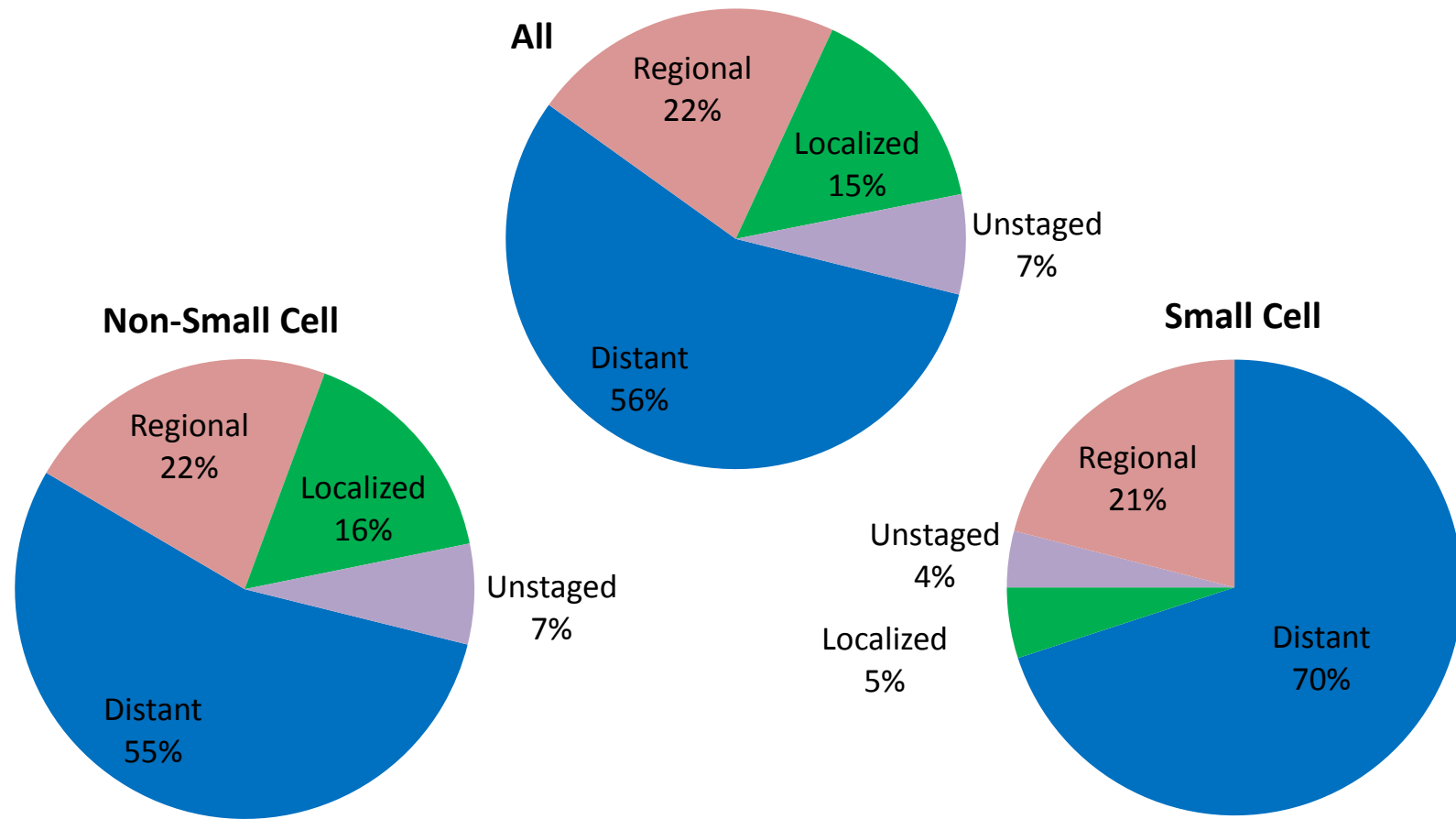
Source: National Cancer Institute. SEER Cancer Statistics Review, 1975-2008.

Notes:

(1) Rates are per 100,000 persons, age-adjusted to the 2000 U.S. standard population and coded by ICD-10.

(2) Hispanics are not mutually exclusive from whites, blacks, Asian/Pacific Islanders and American Indians/Alaska Natives.

**Figure 3: Stage Distribution<sup>1</sup> (%) at Time of Diagnosis by Type, 2001-2007<sup>2</sup>**



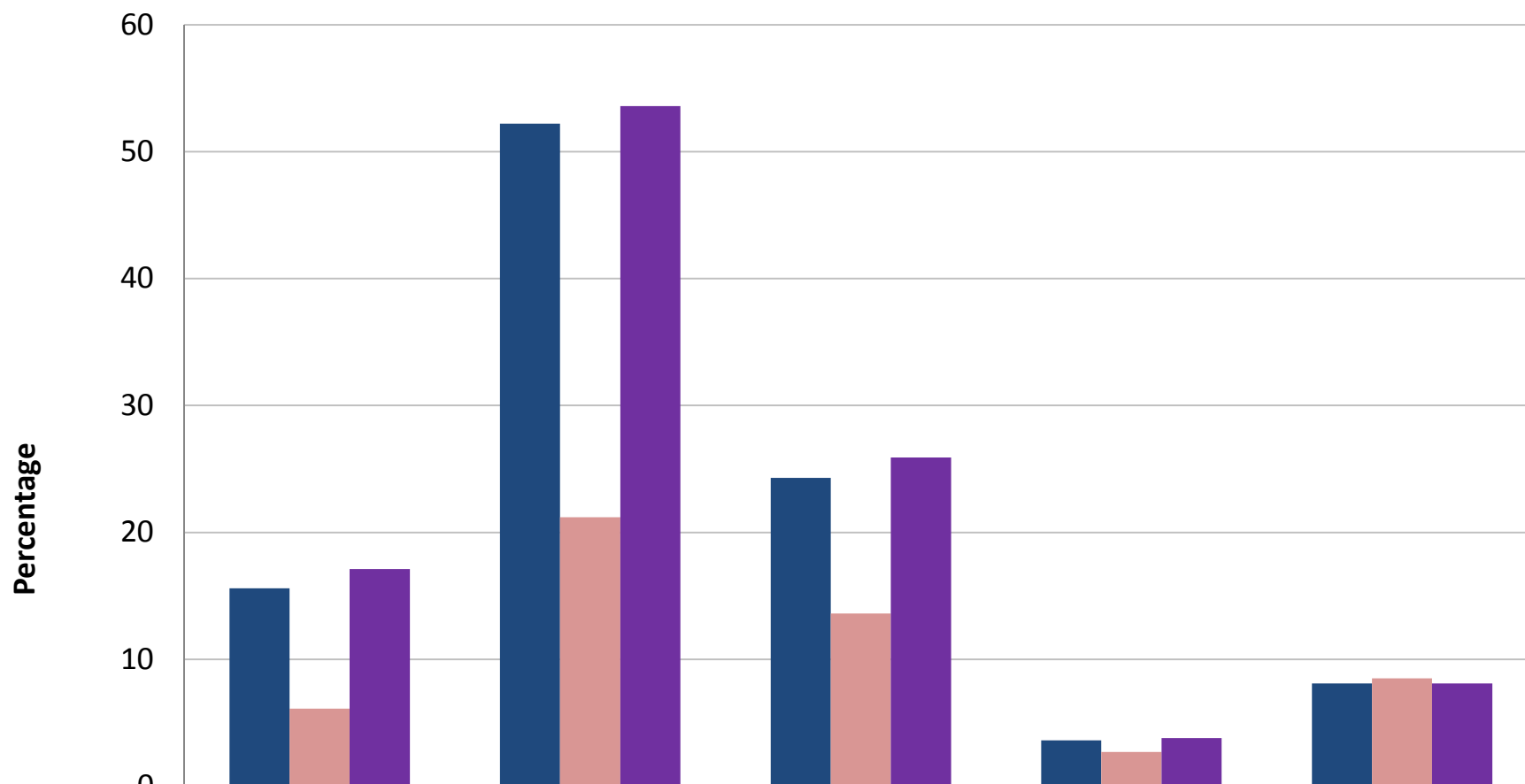
Source: National Cancer Institute. SEER Cancer Statistics Review, 1975-2008.

Notes:

(1) Stages include localized (within lungs), regional (spread to lymph nodes), and distant (spread to other organs).

(2) Rates are from the SEER 17 areas (excluding SF/SJM/LA, Kentucky, Louisiana and New Jersey). Rates are based on follow-up of patients into 2008.

**Figure 4: Five-Year Survival Rates (%) by Type and Stage, 2001-2007**



	All Stages	Localized	Regional	Distant	Unstaged
All Cell	15.6	52.2	24.3	3.6	8.1
Small Cell	6.1	21.2	13.6	2.7	8.5
Non-Small Cell	17.1	53.6	25.9	3.8	8.1

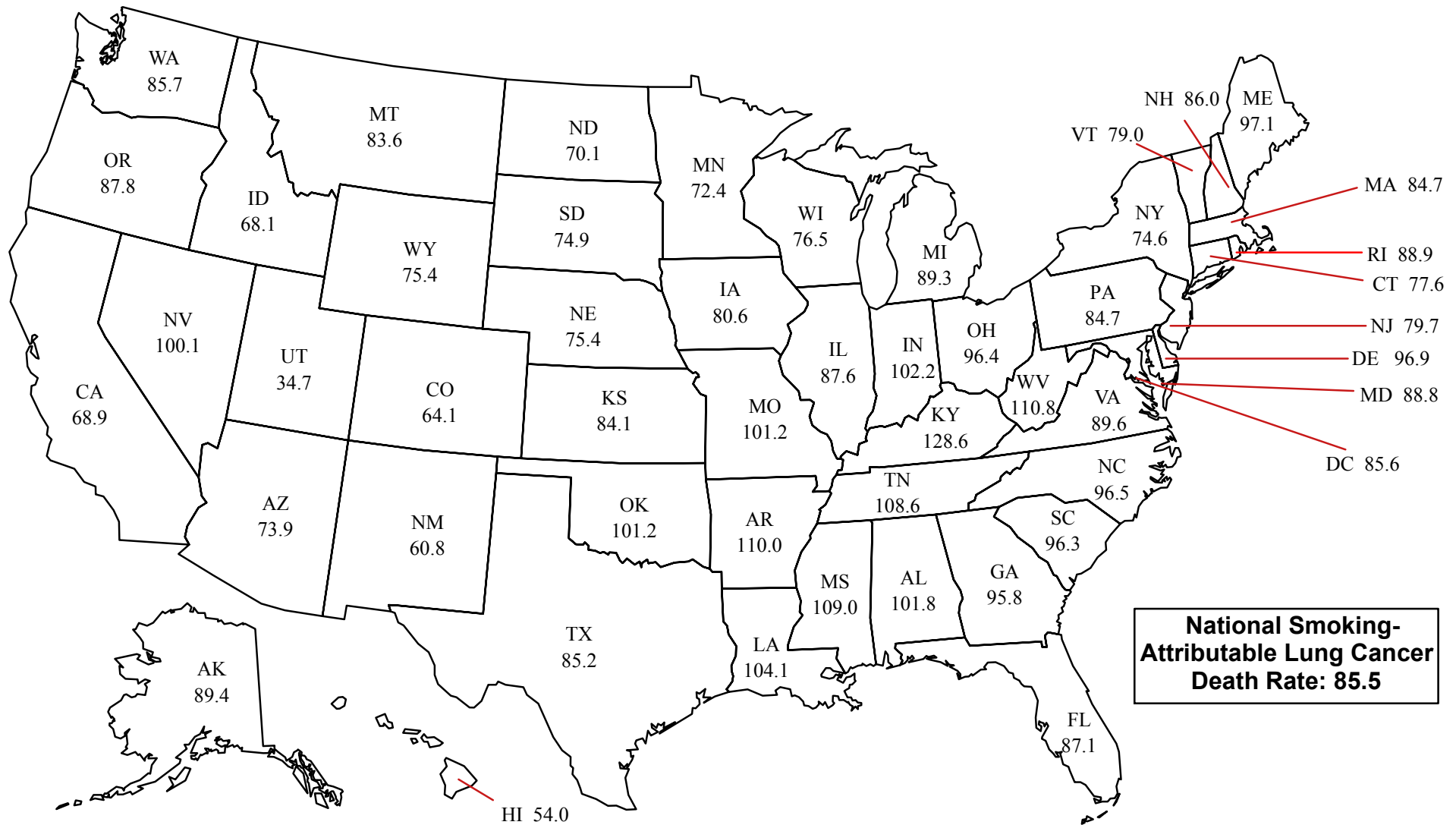
Source: National Cancer Institute. SEER Cancer Statistics Review, 1975-2008.

Notes:

(1) Rates are per 100,000 persons, age-adjusted to the 2000 U.S. standard population and coded by ICD-10.

(2) Rates are from the SEER 17 areas (excluding SF/SJM/LA, Kentucky, Louisiana and New Jersey). Rates are based on follow-up of patients into 2008.

**Figure 5: Age-Adjusted Smoking-Attributable Lung Cancer Mortality Rates per 100,000 Population by State, 2000-2004**



Source: CDC. Smoking-Attributable Mortality, Morbidity and Economic Costs (SAMMEC) Database.

Note:

(1) Rates are per 100,000 U.S. adults aged 35 or older and age-adjusted to the 2000 U.S. Standard Population.